

# TIM-3 antibody

**Cat. No. GTX54117**

|                    |              |
|--------------------|--------------|
| <b>Host</b>        | Rabbit       |
| <b>Clonality</b>   | Polyclonal   |
| <b>Isotype</b>     | IgG          |
| <b>Application</b> | WB, IHC-P    |
| <b>Reactivity</b>  | Human, Mouse |

Reference ( 1 )  
Package  
100 µl

## APPLICATION

### Application Note

\*Optimal dilutions/concentrations should be determined by the researcher.

| Suggested dilution | Recommended dilution |
|--------------------|----------------------|
| WB                 | 1:500 - 1:1000       |
| IHC-P              | 1:50 - 1:200         |

Not tested in other applications.

**Calculated MW** 33 kDa. ( [Note](#) )

## PROPERTIES

|                      |  |
|----------------------|--|
| <b>Form</b>          | Liquid   |
| <b>Buffer</b>        | PBS, 50% Glycerol  |
| <b>Preservative</b>  | 0.02% Sodium azide   |
| <b>Storage</b>       | Store as concentrated solution. Centrifuge briefly prior to opening vial. For short-term storage (1-2 weeks), store at 4°C. For long-term storage, aliquot and store at -20°C or below. Avoid multiple freeze-thaw cycles. |
| <b>Concentration</b> | Batch dependent (Please refer to the vial label for the specific concentration.)   |
| <b>Immunogen</b>     | Recombinant fusion protein containing a sequence corresponding to amino acids 22-202 of human HAVCR2 (NP_116171.3).  |
| <b>Purification</b>  | Purified by affinity chromatography  |
| <b>Conjugation</b>   | Unconjugated   |

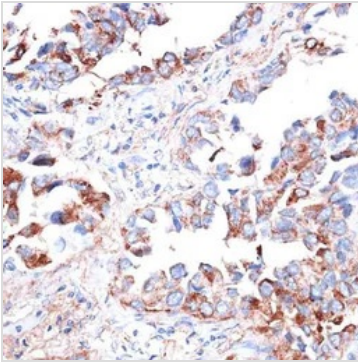
### Note

For laboratory research use only. Not for any clinical, therapeutic, or diagnostic use in humans or animals. Not for animal or human consumption.

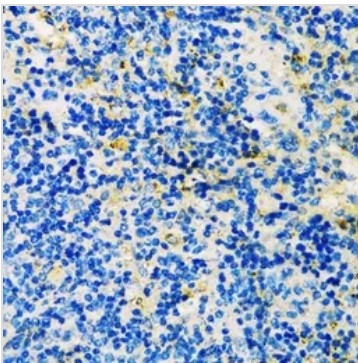
Purchasers shall not, and agree not to enable third parties to, analyze, copy, reverse engineer or otherwise attempt to determine the structure or sequence of the product.



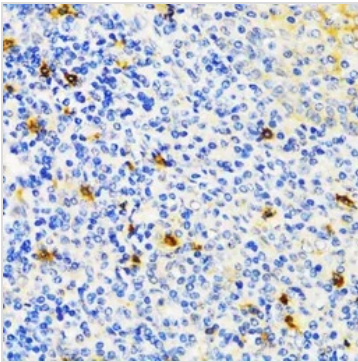
For full product information, images and publications, please visit our [website](#).

**DATA IMAGES**

**GTX54117 IHC-P Image**

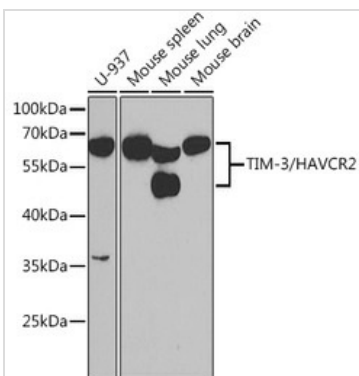
IHC-P analysis of human lung cancer tissue using GTX54117 TIM-3 antibody.  
Dilution : 1:200


**GTX54117 IHC-P Image**

IHC-P analysis of mouse spleen tissue using GTX54117 TIM-3 antibody.  
Dilution : 1:200


**GTX54117 IHC-P Image**

IHC-P analysis of human tonsil tissue using GTX54117 TIM-3 antibody.  
Dilution : 1:200


**GTX54117 WB Image**

WB analysis of various sample lysates using GTX54117 TIM-3 antibody. The signal was developed with ECL plus-Enhanced.  
Dilution : 1:1000  
Loading : 25µg per lane



For full product information, images and publications, please visit our [website](https://www.genetex.com).