

Histone H3R8me2 (Asymmetric Di-methyl Arg8) antibody

Cat. No. GTX54136

Host	Rabbit
Clonality	Polyclonal
Isotype	IgG
Applications	WB, ICC/IF, IHC-P, Dot
Reactivity	Human, Mouse, Rat

Package
100 µl

Applications

Application Note

*Optimal dilutions/concentrations should be determined by the researcher.

Suggested dilution	Recommended dilution
WB	1:500 - 1:2000
ICC/IF	1:50 - 1:200
IHC-P	1:50 - 1:200
Dot	Assay dependent

Not tested in other applications.

Properties

Form	Liquid
Buffer	PBS, 50% Glycerol
Preservative	0.05% ProClin 300
Storage	Store as concentrated solution. Centrifuge briefly prior to opening vial. For short-term storage (1-2 weeks), store at 4°C. For long-term storage, aliquot and store at -20°C or below. Avoid multiple freeze-thaw cycles.
Concentration	1 mg/ml (Please refer to the vial label for the specific concentration.)
Immunogen	A synthetic methylated peptide corresponding to residues surrounding R8 of human histone H3
Purification	Purified by affinity chromatography
Conjugation	Unconjugated

Note

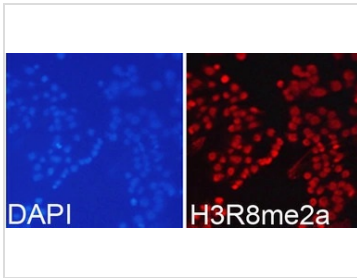
For laboratory research use only. Not for any clinical, therapeutic, or diagnostic use in humans or animals. Not for animal or human consumption.

Purchasers shall not, and agree not to enable third parties to, analyze, copy, reverse engineer or otherwise attempt to determine the structure or sequence of the product.



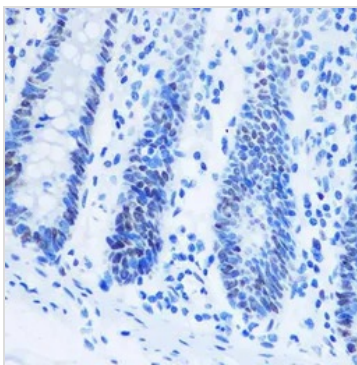
For full product information, images and publications, please visit our [website](#).

DATA IMAGES



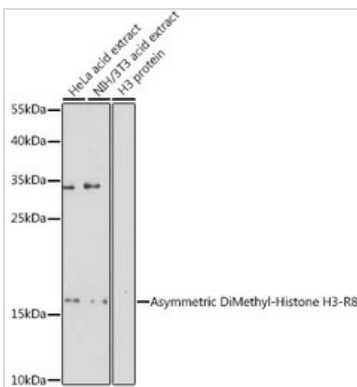
GTX54136 ICC/IF Image

ICC/IF analysis of 293T cells using GTX54136 Histone H3R8me2 (Asymmetric Di-methyl Arg8) antibody.
Blue : DAPI



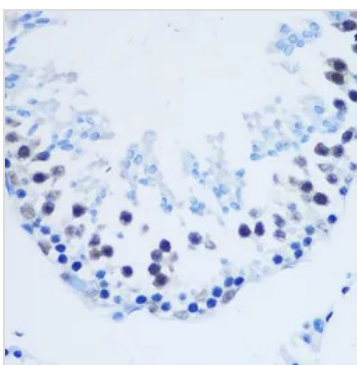
GTX54136 IHC-P Image

IHC-P analysis of human colon tissue using GTX54136 Histone H3R8me2 (Asymmetric Di-methyl Arg8) antibody.
Dilution : 1:100



GTX54136 WB Image

WB analysis of various sample lysates using GTX54136 Histone H3R8me2 (Asymmetric Di-methyl Arg8) antibody.
Dilution : 1:500
Loading : 25µg per lane



GTX54136 IHC-P Image

IHC-P analysis of rat testis tissue using GTX54136 Histone H3R8me2 (Asymmetric Di-methyl Arg8) antibody.
Dilution : 1:100



For full product information, images and publications, please visit our [website](https://www.genetex.com).