

# Histone H3R26me1 (mono-methyl Arg26) antibody

**Cat. No. GTX54139**

<b>Host</b>	Rabbit
<b>Clonality</b>	Polyclonal
<b>Isotype</b>	IgG
<b>Application</b>	WB, ICC/IF, IHC-P, Dot
<b>Reactivity</b>	Human, Mouse

**Package**  
100 µl

## APPLICATION

### Application Note

\*Optimal dilutions/concentrations should be determined by the researcher.

Suggested dilution	Recommended dilution
WB	1:500 - 1:2000
ICC/IF	1:50 - 1:200
IHC-P	1:50 - 1:200
Dot	Assay dependent

Not tested in other applications.

## PROPERTIES

<b>Form</b>	Liquid
<b>Buffer</b>	PBS, 50% Glycerol
<b>Preservative</b>	0.02% Sodium azide
<b>Storage</b>	Store as concentrated solution. Centrifuge briefly prior to opening vial. For short-term storage (1-2 weeks), store at 4°C. For long-term storage, aliquot and store at -20°C or below. Avoid multiple freeze-thaw cycles.
<b>Concentration</b>	1 mg/ml (Please refer to the vial label for the specific concentration.)
<b>Immunogen</b>	A synthetic methylated peptide corresponding to residues surrounding R26 of human histone H3
<b>Purification</b>	Purified by affinity chromatography
<b>Conjugation</b>	Unconjugated

### Note

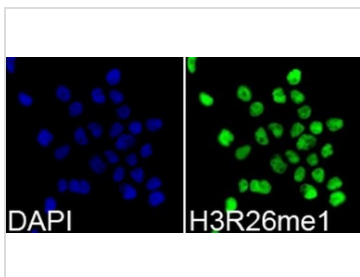
For laboratory research use only. Not for any clinical, therapeutic, or diagnostic use in humans or animals. Not for animal or human consumption.

Purchasers shall not, and agree not to enable third parties to, analyze, copy, reverse engineer or otherwise attempt to determine the structure or sequence of the product.



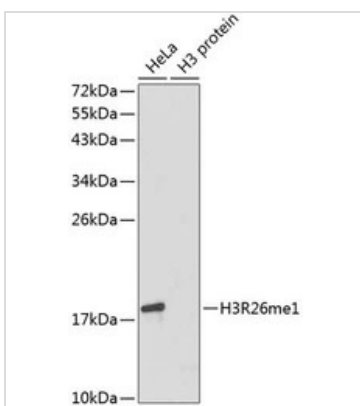
For full product information, images and publications, please visit our [website](#).

DATA IMAGES



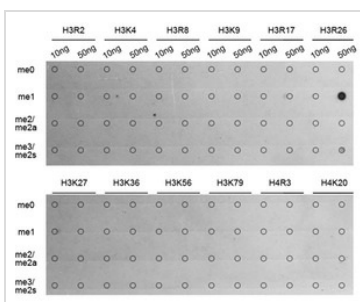
**GTX54139 ICC/IF Image**

ICC/IF analysis of 293T cells using GTX54139 Histone H3R26me1 (mono-methyl Arg26) antibody.  
Blue : DAPI



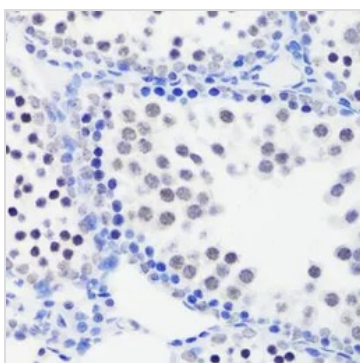
**GTX54139 WB Image**

WB analysis of various sample lysates using GTX54139 Histone H3R26me1 (mono-methyl Arg26) antibody.  
Loading : 25µg per lane



**GTX54139 Dot Image**

Dot blot analysis of all sorts of methylation peptides using GTX54139 Histone H3R26me1 (mono-methyl Arg26) antibody.



**GTX54139 IHC-P Image**

IHC-P analysis of mouse testis tissue using GTX54139 Histone H3R26me1 (mono-methyl Arg26) antibody.  
Dilution : 1:100



For full product information, images and publications, please visit our [website](https://www.genetex.com).