

Histone H3R26me1 (mono-methyl Arg26) antibody

Cat. No. GTX54139

Host	Rabbit
Clonality	Polyclonal
Isotype	IgG
Applications	WB, ICC/IF, IHC-P, Dot
Reactivity	Human, Mouse

Package
100 µl

Applications

Application Note

*Optimal dilutions/concentrations should be determined by the researcher.

Suggested dilution	Recommended dilution
WB	1:500 - 1:2000
ICC/IF	1:50 - 1:200
IHC-P	1:50 - 1:200
Dot	Assay dependent

Not tested in other applications.

Properties

Form	Liquid
Buffer	PBS, 50% Glycerol
Preservative	0.02% Sodium azide
Storage	Store as concentrated solution. Centrifuge briefly prior to opening vial. For short-term storage (1-2 weeks), store at 4°C. For long-term storage, aliquot and store at -20°C or below. Avoid multiple freeze-thaw cycles.
Concentration	1 mg/ml (Please refer to the vial label for the specific concentration.)
Immunogen	A synthetic methylated peptide corresponding to residues surrounding R26 of human histone H3
Purification	Purified by affinity chromatography
Conjugation	Unconjugated

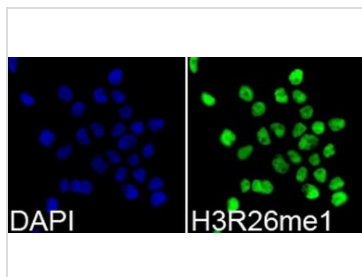
Note For laboratory research use only. Not for any clinical, therapeutic, or diagnostic use in humans or animals. Not for animal or human consumption.

Purchasers shall not, and agree not to enable third parties to, analyze, copy, reverse engineer or otherwise attempt to determine the structure or sequence of the product.



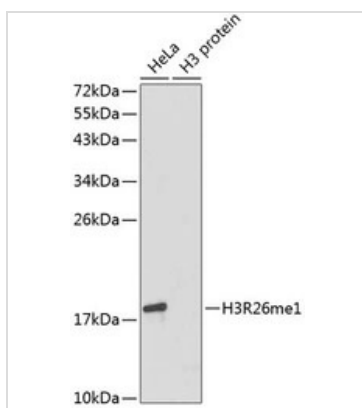
For full product information, images and publications, please visit our [website](#).

DATA IMAGES



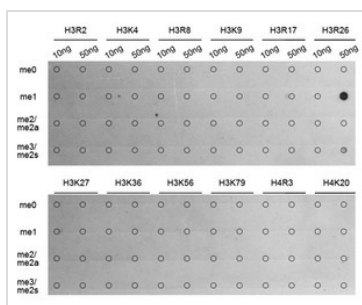
GTX54139 ICC/IF Image

ICC/IF analysis of 293T cells using GTX54139 Histone H3R26me1 (mono-methyl Arg26) antibody.
Blue : DAPI



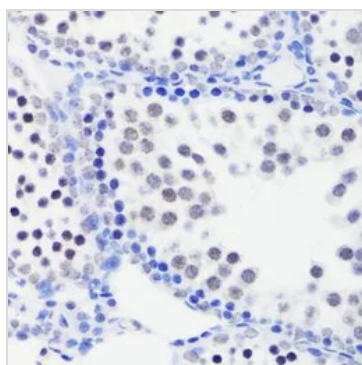
GTX54139 WB Image

WB analysis of various sample lysates using GTX54139 Histone H3R26me1 (mono-methyl Arg26) antibody.
Loading : 25µg per lane



GTX54139 Dot Image

Dot blot analysis of all sorts of methylation peptides using GTX54139 Histone H3R26me1 (mono-methyl Arg26) antibody.



GTX54139 IHC-P Image

IHC-P analysis of mouse testis tissue using GTX54139 Histone H3R26me1 (mono-methyl Arg26) antibody.
Dilution : 1:100



For full product information, images and publications, please visit our [website](#).