

H6PD antibody

Cat. No. GTX54162

Host	Rabbit
Clonality	Polyclonal
Isotype	IgG
Applications	WB, ICC/IF, IHC-P
Reactivity	Human, Mouse, Rat

Package
100 µl

Applications

Application Note

*Optimal dilutions/concentrations should be determined by the researcher.

Suggested dilution	Recommended dilution
WB	1:500 - 1:2000
ICC/IF	1:10 - 1:100
IHC-P	1:50 - 1:200

Not tested in other applications.

Calculated MW 89 kDa. ([Note](#))

Properties

Form	Liquid
Buffer	PBS, 50% Glycerol
Preservative	0.02% Sodium azide
Storage	Store as concentrated solution. Centrifuge briefly prior to opening vial. For short-term storage (1-2 weeks), store at 4°C. For long-term storage, aliquot and store at -20°C or below. Avoid multiple freeze-thaw cycles.
Concentration	1 mg/ml (Please refer to the vial label for the specific concentration.)
Immunogen	Recombinant fusion protein containing a sequence corresponding to amino acids 20-200 of human H6PD (NP_004276.2).
Purification	Purified by affinity chromatography
Conjugation	Unconjugated

Note

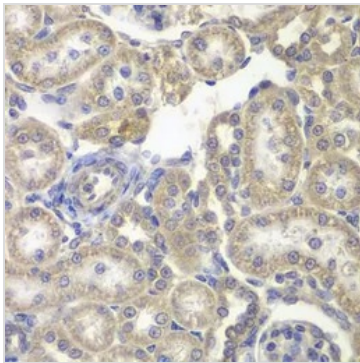
For laboratory research use only. Not for any clinical, therapeutic, or diagnostic use in humans or animals. Not for animal or human consumption.

Purchasers shall not, and agree not to enable third parties to, analyze, copy, reverse engineer or otherwise attempt to determine the structure or sequence of the product.



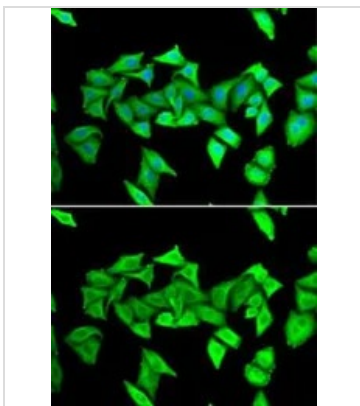
For full product information, images and publications, please visit our [website](#).

DATA IMAGES



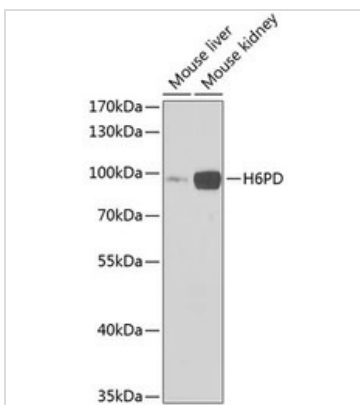
GTX54162 IHC-P Image

IHC-P analysis of rat kidney tissue using GTX54162 H6PD antibody.
Dilution : 1:200



GTX54162 ICC/IF Image

ICC/IF analysis of U2OS cells using GTX54162 H6PD antibody.
Blue : DAPI



GTX54162 WB Image

WB analysis of various sample lysates using GTX54162 H6PD antibody. The signal was developed with ECL plus-Enhanced.
Dilution : 1:1000
Loading : 25µg per lane



For full product information, images and publications, please visit our [website](https://www.genetex.com).