

Casp3b antibody

Cat. No. GTX54181

Host	Rabbit
Clonality	Polyclonal
Isotype	IgG
Application	WB
Reactivity	Zebrafish, Fish

Reference (2)
Package
50 µl

APPLICATION

Application Note

For WB: Use at a dilution of 1:500-1:1000. Optimal dilutions should be determined experimentally by the researcher.

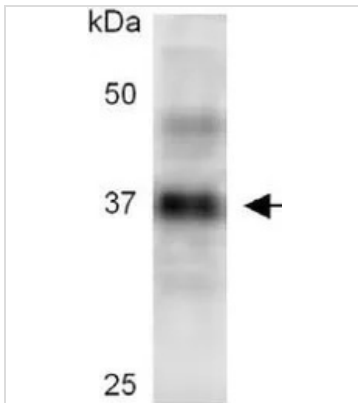
PROPERTIES

Form	Liquid
Buffer	MOPS buffer (pH7.5), 0.1% BSA, 50% Glycerol
Preservative	0.05% Sodium azide
Storage	Store as concentrated solution. Centrifuge briefly prior to opening vial. For short-term storage (1-2 weeks), store at 4°C. For long-term storage, aliquot and store at -20°C or below. Avoid multiple freeze-thaw cycles.
Immunogen	synthetic peptide derived from the C-terminal region of zebrafish Caspase-3b p12 domain
Conjugation	Unconjugated
Note	For laboratory research use only. Not for any clinical, therapeutic, or diagnostic use in humans or animals. Not for animal or human consumption. Purchasers shall not, and agree not to enable third parties to, analyze, copy, reverse engineer or otherwise attempt to determine the structure or sequence of the product.



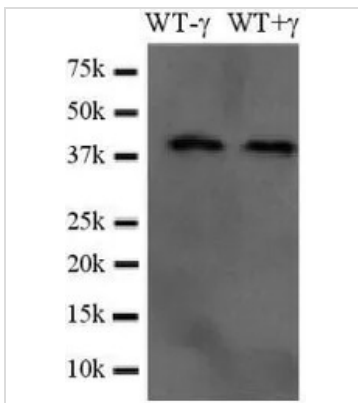
For full product information, images and publications, please visit our [website](#).

DATA IMAGES



GTx54181 WB Image

WB analysis of zebrafish embryonic lysate (24 hpf) using Casp3b antibody.



GTx54181 WB Image

WB analysis of untreated or 25Gy gamma radiation treated 3 dpf wild type zebrafish embryos (lysed in TritonX-100 lysis buffer with protease inhibitors) using Casp3b antibody.



For full product information, images and publications, please visit our [website](https://www.genetex.com).