

Pcna antibody

Cat. No. GTX54187

Host	Rabbit
Clonality	Polyclonal
Isotype	IgG
Applications	WB, IHC-Fr
Reactivity	Zebrafish

Package

50 µl

Applications

Application Note

*Optimal dilutions/concentrations should be determined by the researcher.

Suggested dilution	Recommended dilution
WB	Assay dependent
IHC-Fr	Assay dependent

Not tested in other applications.

Calculated MW 29 kDa. ([Note](#))

Properties

Form	Liquid
Buffer	MOPS buffer, 0.1% BSA, 50% Glycerol
Preservative	0.05% Sodium azide
Storage	Store as concentrated solution. Centrifuge briefly prior to opening vial. For short-term storage (1-2 weeks), store at 4°C. For long-term storage, aliquot and store at -20°C or below. Avoid multiple freeze-thaw cycles.
Immunogen	synthetic peptide derived from the intermediate region of zebrafish PCNA protein
Conjugation	Unconjugated

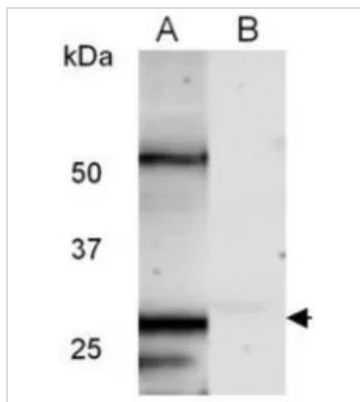
Note

For laboratory research use only. Not for any clinical, therapeutic, or diagnostic use in humans or animals. Not for animal or human consumption.

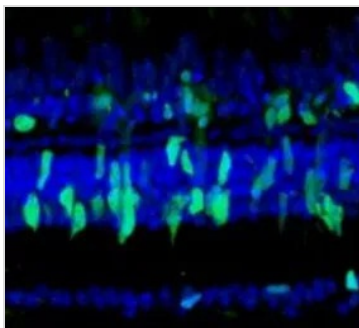
Purchasers shall not, and agree not to enable third parties to, analyze, copy, reverse engineer or otherwise attempt to determine the structure or sequence of the product.



For full product information, images and publications, please visit our [website](#).

DATA IMAGES

GTX54187 WB Image

WB analysis of zebrafish embryonic lysate (48 hpf) using PcnA antibody in the (A) absence or (B) presence of blocking peptide.


GTX54187 IHC-Fr Image

Adult albino zebrafish were exposed to intense light for 31 hours. Following light treatment, eyes were enucleated, fixed and processed for cryosectioning. IHC-Fr analysis of the retinal sections using PcnA antibody (green) and counterstain (blue).



For full product information, images and publications, please visit our [website](#).