

# Bmp2b antibody

**Cat. No. GTX54233**

<b>Host</b>	Rabbit
<b>Clonality</b>	Polyclonal
<b>Isotype</b>	IgG
<b>Applications</b>	WB
<b>Reactivity</b>	Zebrafish

References ( 2 )

Package

50 µl

## Applications

### Application Note

\*Optimal dilutions/concentrations should be determined by the researcher.

Suggested dilution	Recommended dilution
WB	Assay dependent

Not tested in other applications.

## Properties

<b>Form</b>	Liquid
<b>Buffer</b>	MOPS buffer, 0.1% BSA, 50% Glycerol
<b>Preservative</b>	0.05% Sodium azide
<b>Storage</b>	Store as concentrated solution. Centrifuge briefly prior to opening vial. For short-term storage (1-2 weeks), store at 4°C. For long-term storage, aliquot and store at -20°C or below. Avoid multiple freeze-thaw cycles.
<b>Immunogen</b>	synthetic peptide within 1 to 50 amino acid residues from the N-terminal region (aa1-50) of zebrafish Bmp-2b protein (GenBank accession # NP_571435.1). It doesn't recognize the mature form of the BMP2b protein
<b>Conjugation</b>	Unconjugated

### Note

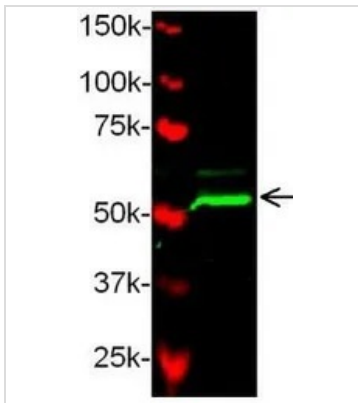
For laboratory research use only. Not for any clinical, therapeutic, or diagnostic use in humans or animals. Not for animal or human consumption.

Purchasers shall not, and agree not to enable third parties to, analyze, copy, reverse engineer or otherwise attempt to determine the structure or sequence of the product.



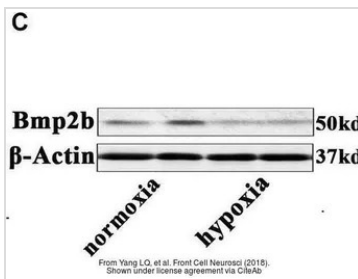
For full product information, images and publications, please visit our [website](#).

DATA IMAGES



**GTx54233 WB Image**

WB analysis of zebrafish larvae (5 dpf) lysate using Bmp2b antibody.



**GTx54233 WB Image**

The data was published in the journal Front Cell Neurosci in 2018. [PMID: 30337858](https://pubmed.ncbi.nlm.nih.gov/30337858/)



For full product information, images and publications, please visit our [website](https://www.genetex.com).