

Kv11.1 antibody

Cat. No. GTX54285

Host	Rabbit
Clonality	Polyclonal
Isotype	IgG
Applications	WB, IHC-P
Reactivity	Human, Mouse

Package
100 µl

Applications

Application Note

*Optimal dilutions/concentrations should be determined by the researcher.

Suggested dilution	Recommended dilution
WB	1:500 - 1:2000
IHC-P	1:50 - 1:200

Not tested in other applications.

Calculated MW 127 kDa. ([Note](#))

Properties

Form	Liquid
Buffer	PBS, 50% Glycerol
Preservative	0.02% Sodium azide
Storage	Store as concentrated solution. Centrifuge briefly prior to opening vial. For short-term storage (1-2 weeks), store at 4°C. For long-term storage, aliquot and store at -20°C or below. Avoid multiple freeze-thaw cycles.
Concentration	Batch dependent (Please refer to the vial label for the specific concentration.)
Immunogen	A synthetic peptide of human KCNH2
Purification	Purified by affinity chromatography
Conjugation	Unconjugated

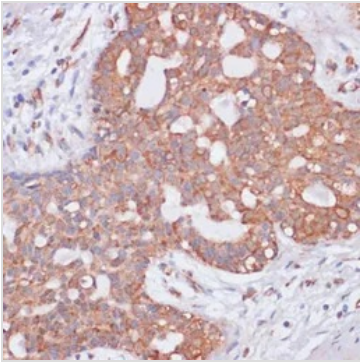
Note

For laboratory research use only. Not for any clinical, therapeutic, or diagnostic use in humans or animals. Not for animal or human consumption.

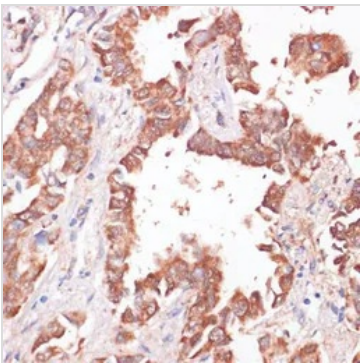
Purchasers shall not, and agree not to enable third parties to, analyze, copy, reverse engineer or otherwise attempt to determine the structure or sequence of the product.



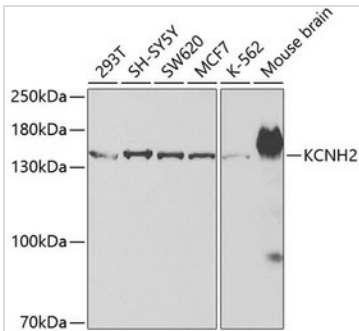
For full product information, images and publications, please visit our [website](#).

DATA IMAGES

GTX54285 IHC-P Image

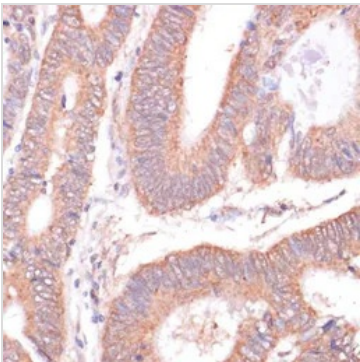
IHC-P analysis of human breast cancer tissue using GTX54285 Kv11.1 antibody.
Dilution : 1:100


GTX54285 IHC-P Image

IHC-P analysis of human lung cancer tissue using GTX54285 Kv11.1 antibody.
Dilution : 1:100


GTX54285 WB Image

WB analysis of various sample lysates using GTX54285 Kv11.1 antibody. The signal was developed with ECL plus-Enhanced.
Dilution : 1:500
Loading : 25µg per lane


GTX54285 IHC-P Image

IHC-P analysis of human colon carcinoma tissue using GTX54285 Kv11.1 antibody.
Dilution : 1:100



For full product information, images and publications, please visit our [website](https://www.genetex.com).