

Lamin B1 antibody

Cat. No. GTX54288

| | |
|---------------------|-----------------------------------|
| Host | Rabbit |
| Clonality | Polyclonal |
| Isotype | IgG |
| Applications | WB, ICC/IF, IHC-P, IP, ChIP assay |
| Reactivity | Human, Mouse, Rat |

Package
100 µl

Applications

Application Note

*Optimal dilutions/concentrations should be determined by the researcher.

| Suggested dilution | Recommended dilution |
|--------------------|----------------------|
| WB | 1:500 - 1:2000 |
| ICC/IF | 1:50 - 1:200 |
| IHC-P | 1:50 - 1:200 |
| IP | Assay dependent |
| ChIP assay | Assay dependent |

Not tested in other applications.

Calculated MW 66 kDa. ([Note](#))

Properties

| | |
|----------------------|--|
| Form | Liquid |
| Buffer | PBS, 50% Glycerol |
| Preservative | 0.02% Sodium azide |
| Storage | Store as concentrated solution. Centrifuge briefly prior to opening vial. For short-term storage (1-2 weeks), store at 4°C. For long-term storage, aliquot and store at -20°C or below. Avoid multiple freeze-thaw cycles. |
| Concentration | Batch dependent (Please refer to the vial label for the specific concentration.) |
| Immunogen | Recombinant fusion protein containing a sequence corresponding to amino acids 397-586 of human LMNB1 (NP_005564.1). |
| Purification | Purified by affinity chromatography |
| Conjugation | Unconjugated |

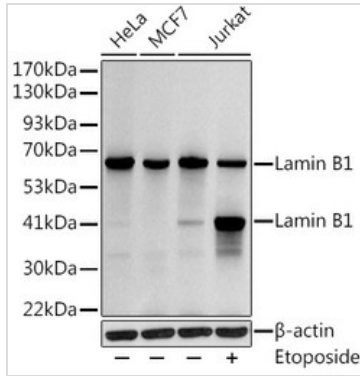


For full product information, images and publications, please visit our [website](#).

For laboratory research use only. Not for any clinical, therapeutic, or diagnostic use in humans or animals. Not for animal or human consumption.

Note

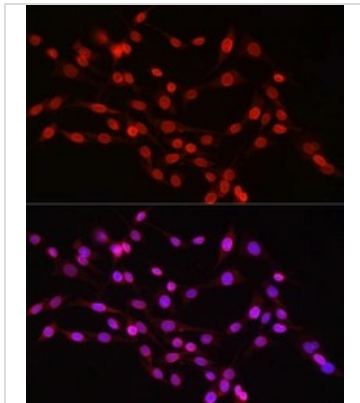
Purchasers shall not, and agree not to enable third parties to, analyze, copy, reverse engineer or otherwise attempt to determine the structure or sequence of the product.

DATA IMAGES

GTX54288 WB Image

WB analysis of various cell lysates using GTX54288 Lamin B1 antibody. Jurkat cells were treated by Etoposide (25 μ M) at 37°C for 5 hours.

Loading: 25 μ g per lane

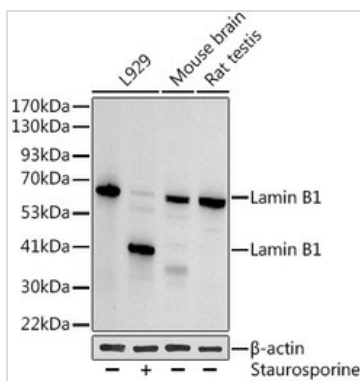
Dilution : 1:1000


GTX54288 ICC/IF Image

ICC/IF analysis of PC-12 cells using GTX54288 Lamin B1 antibody.

Dilution : 1:150

Blue : DAPI


GTX54288 WB Image

WB analysis of various cell lysates using GTX54288 Lamin B1 antibody. L929 cells were treated by staurosporine(1 μ M) for 3 hour.

Loading: 25 μ g per lane

Dilution : 1:1000



For full product information, images and publications, please visit our [website](https://www.genetex.com).