

LSD1 antibody

Cat. No. GTX54328

Host	Rabbit
Clonality	Polyclonal
Isotype	IgG
Applications	WB, ICC/IF, IP
Reactivity	Human

References (1)

Package

100 µl

Applications

Application Note

*Optimal dilutions/concentrations should be determined by the researcher.

Suggested dilution	Recommended dilution
WB	1:500 - 1:2000
ICC/IF	1:50 - 1:100
IP	1:50 - 1:100

Not tested in other applications.

Calculated MW 93 kDa. ([Note](#))

Properties

Form	Liquid
Buffer	PBS, 50% Glycerol
Preservative	0.02% Sodium azide
Storage	Store as concentrated solution. Centrifuge briefly prior to opening vial. For short-term storage (1-2 weeks), store at 4°C. For long-term storage, aliquot and store at -20°C or below. Avoid multiple freeze-thaw cycles.
Concentration	Batch dependent (Please refer to the vial label for the specific concentration.)
Immunogen	Recombinant fusion protein containing a sequence corresponding to amino acids 130-380 of human KDM1A (NP_055828.2).
Purification	Purified by affinity chromatography
Conjugation	Unconjugated

Note

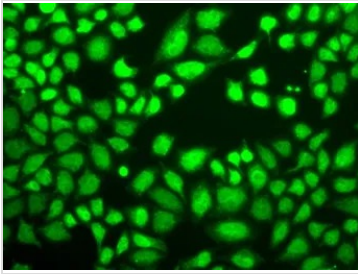
For laboratory research use only. Not for any clinical, therapeutic, or diagnostic use in humans or animals. Not for animal or human consumption.

Purchasers shall not, and agree not to enable third parties to, analyze, copy, reverse engineer or otherwise attempt to determine the structure or sequence of the product.



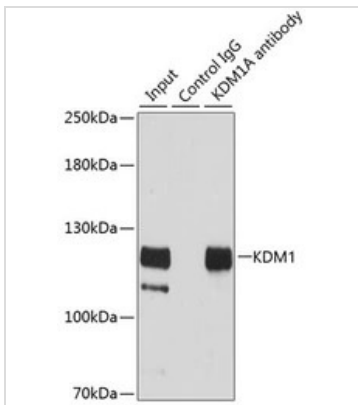
For full product information, images and publications, please visit our [website](#).

DATA IMAGES



GTX54328 ICC/IF Image

ICC/IF analysis of A549 cells using GTX54328 LSD1 antibody.

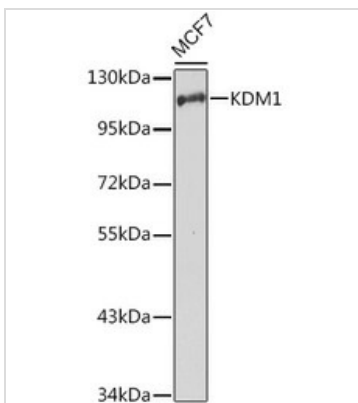


GTX54328 IP Image

IP analysis of HeLa cell lysate using GTX54328 LSD1 antibody.

Antibody amount : 3 μ g / 200 μ g lysate

Dilution : 1:500

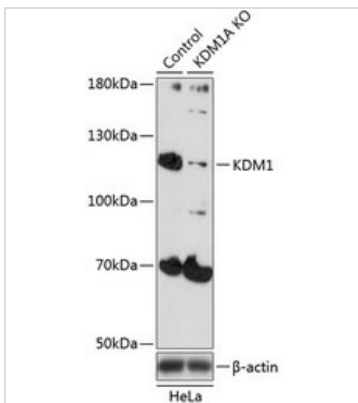


GTX54328 WB Image

WB analysis of MCF7 cell lysate using GTX54328 LSD1 antibody.

Dilution : 1:1000

Loading : 25 μ g per lane



GTX54328 WB Image

WB analysis of normal (control) and knockout (KO) HeLa cell lysate using GTX54328 LSD1 antibody.

Dilution : 1:500

Loading : 25 μ g per lane



For full product information, images and publications, please visit our [website](https://www.genetex.com).