

Cytokeratin 19 antibody

Cat. No. GTX54330

| | |
|---------------------|-------------------|
| Host | Rabbit |
| Clonality | Polyclonal |
| Isotype | IgG |
| Applications | WB, IHC-P |
| Reactivity | Human, Mouse, Rat |

Package
100 µl

Applications

Application Note

*Optimal dilutions/concentrations should be determined by the researcher.

| Suggested dilution | Recommended dilution |
|--------------------|----------------------|
| WB | 1:500 - 1:2000 |
| IHC-P | 1:50 - 1:200 |

Not tested in other applications.

Calculated MW 44 kDa. ([Note](#))

Properties

| | |
|----------------------|--|
| Form | Liquid |
| Buffer | PBS, 50% Glycerol |
| Preservative | 0.09% Sodium azide |
| Storage | Store as concentrated solution. Centrifuge briefly prior to opening vial. For short-term storage (1-2 weeks), store at 4°C. For long-term storage, aliquot and store at -20°C or below. Avoid multiple freeze-thaw cycles. |
| Concentration | Batch dependent (Please refer to the vial label for the specific concentration.) |
| Immunogen | Recombinant fusion protein containing a sequence corresponding to amino acids 241-400 of human KRT19 (NP_002267.2). |
| Purification | Purified by affinity chromatography |
| Conjugation | Unconjugated |

Note

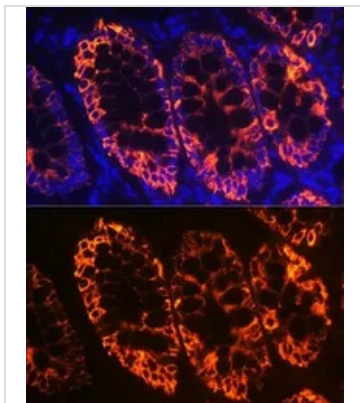
For laboratory research use only. Not for any clinical, therapeutic, or diagnostic use in humans or animals. Not for animal or human consumption.

Purchasers shall not, and agree not to enable third parties to, analyze, copy, reverse engineer or otherwise attempt to determine the structure or sequence of the product.



For full product information, images and publications, please visit our [website](#).

DATA IMAGES

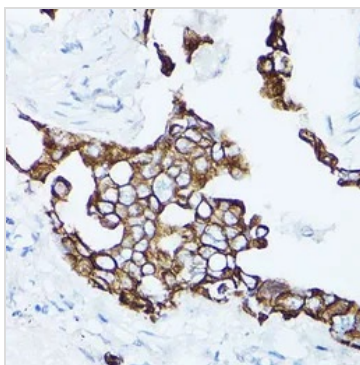


GTx54330 IHC-P Image

IHC-P analysis of human colon carcinoma tissue using GTx54330 Cytokeratin 19 antibody.

Blue : DAPI

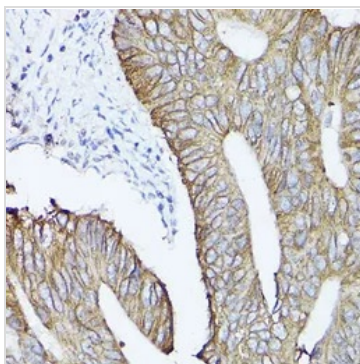
Dilution : 1:100



GTx54330 IHC-P Image

IHC-P analysis of human liver cancer tissue using GTx54330 Cytokeratin 19 antibody.

Dilution : 1:100



GTx54330 IHC-P Image

IHC-P analysis of rat kidney tissue using GTx54330 Cytokeratin 19 antibody.

Dilution : 1:100



For full product information, images and publications, please visit our [website](#).