

## Cytokeratin 20 antibody

Cat. No. GTX54340

Host	Rabbit
Clonality	Polyclonal
Isotype	IgG
Applications	WB, ICC/IF, IHC-P
Reactivity	Human, Mouse

Package  
100 µl

## Applications

## Application Note

\*Optimal dilutions/concentrations should be determined by the researcher.

Suggested dilution	Recommended dilution
WB	1:500 - 1:2000
ICC/IF	1:50 - 1:200
IHC-P	1:50 - 1:200

Not tested in other applications.

Calculated MW 48 kDa. ( [Note](#) )

## Properties

Form	Liquid
Buffer	PBS, 50% Glycerol
Preservative	0.02% Sodium azide
Storage	Store as concentrated solution. Centrifuge briefly prior to opening vial. For short-term storage (1-2 weeks), store at 4°C. For long-term storage, aliquot and store at -20°C or below. Avoid multiple freeze-thaw cycles.
Concentration	Batch dependent (Please refer to the vial label for the specific concentration.)
Immunogen	Recombinant fusion protein containing a sequence corresponding to amino acids 245-424 of human KRT20 (NP_061883.1).
Purification	Purified by affinity chromatography
Conjugation	Unconjugated

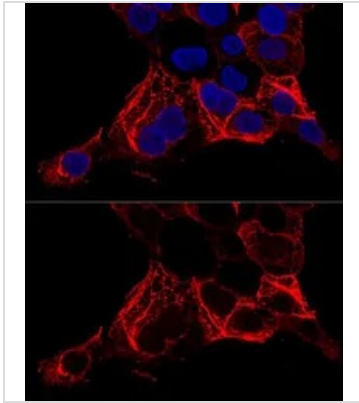
## Note

For laboratory research use only. Not for any clinical, therapeutic, or diagnostic use in humans or animals. Not for animal or human consumption.

Purchasers shall not, and agree not to enable third parties to, analyze, copy, reverse engineer or otherwise attempt to determine the structure or sequence of the product.



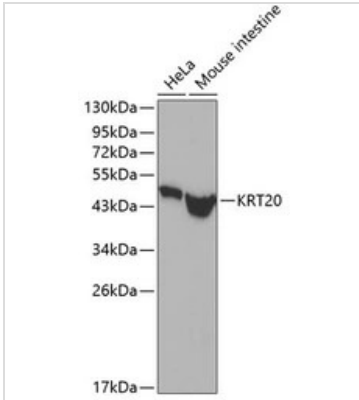
For full product information, images and publications, please visit our [website](#).

**DATA IMAGES**

**GTX54340 ICC/IF Image**

ICC/IF analysis of A431 cells using GTX54340 Cytokeratin 20 antibody.

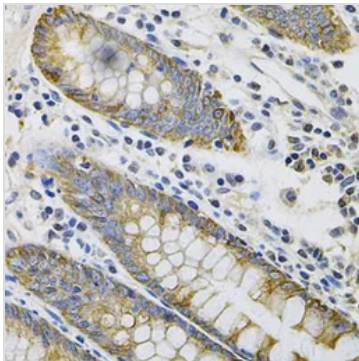
Blue : DAPI

Dilution : 1:200


**GTX54340 WB Image**

WB analysis of various sample lysates using GTX54340 Cytokeratin 20 antibody.

Loading : 25µg per lane


**GTX54340 IHC-P Image**

IHC-P analysis of human colon tissue using GTX54340 Cytokeratin 20 antibody.

Dilution : 1:100



For full product information, images and publications, please visit our [website](https://www.genetex.com).