

## Monoamine Oxidase A antibody

Cat. No. GTX54351

Host	Rabbit
Clonality	Polyclonal
Isotype	IgG
Applications	WB, ICC/IF, IHC-P
Reactivity	Human, Mouse, Rat

Package  
100 µl

## Applications

## Application Note

\*Optimal dilutions/concentrations should be determined by the researcher.

Suggested dilution	Recommended dilution
WB	1:500 - 1:2000
ICC/IF	1:50 - 1:200
IHC-P	1:50 - 1:200

Not tested in other applications.

Calculated MW 60 kDa. ( [Note](#) )

## Properties

Form	Liquid
Buffer	PBS, 50% Glycerol
Preservative	0.02% Sodium azide
Storage	Store as concentrated solution. Centrifuge briefly prior to opening vial. For short-term storage (1-2 weeks), store at 4°C. For long-term storage, aliquot and store at -20°C or below. Avoid multiple freeze-thaw cycles.
Concentration	Batch dependent (Please refer to the vial label for the specific concentration.)
Immunogen	Recombinant fusion protein containing a sequence corresponding to amino acids 1-260 of human MAOA (NP_000231.1).
Purification	Purified by affinity chromatography
Conjugation	Unconjugated

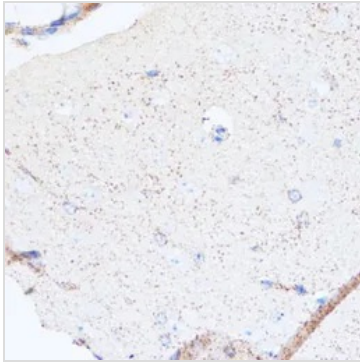
## Note

For laboratory research use only. Not for any clinical, therapeutic, or diagnostic use in humans or animals. Not for animal or human consumption.

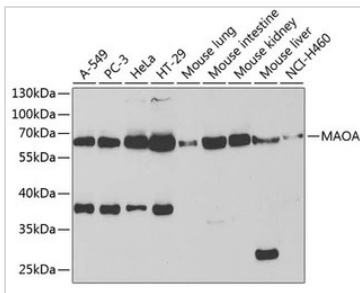
Purchasers shall not, and agree not to enable third parties to, analyze, copy, reverse engineer or otherwise attempt to determine the structure or sequence of the product.



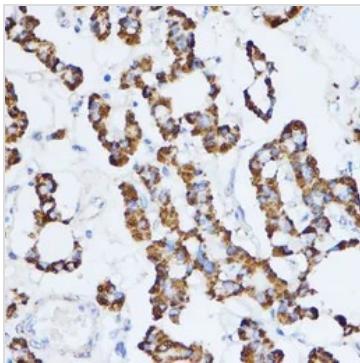
For full product information, images and publications, please visit our [website](#).

**DATA IMAGES**

**GTX54351 IHC-P Image**

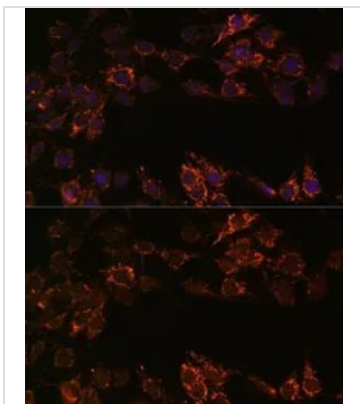
IHC-P analysis of mouse brain tissue using GTX54351 Monoamine Oxidase A antibody.  
Dilution : 1:100


**GTX54351 WB Image**

WB analysis of various sample lysates using GTX54351 Monoamine Oxidase A antibody.  
Dilution : 1:1000  
Loading : 25µg per lane


**GTX54351 IHC-P Image**

IHC-P analysis of human thyroid cancer tissue using GTX54351 Monoamine Oxidase A antibody.  
Dilution : 1:100


**GTX54351 ICC/IF Image**

ICC/IF analysis of C6 cells using GTX54351 Monoamine Oxidase A antibody.  
Blue : DAPI  
Dilution : 1:100



For full product information, images and publications, please visit our [website](https://www.genetex.com).