

GPR54 antibody

Cat. No. GTX54378

Host	Rabbit
Clonality	Polyclonal
Isotype	IgG
Applications	WB, IHC-P
Reactivity	Human, Mouse, Rat

Package
100 µl

Applications

Application Note

*Optimal dilutions/concentrations should be determined by the researcher.

Suggested dilution	Recommended dilution
WB	1:500 - 1:1000
IHC-P	1:50 - 1:100

Not tested in other applications.

Calculated MW 43 kDa. ([Note](#))

Properties

Form	Liquid
Buffer	PBS, 50% Glycerol
Preservative	0.05% ProClin 300
Storage	Store as concentrated solution. Centrifuge briefly prior to opening vial. For short-term storage (1-2 weeks), store at 4°C. For long-term storage, aliquot and store at -20°C or below. Avoid multiple freeze-thaw cycles.
Concentration	Batch dependent (Please refer to the vial label for the specific concentration.)
Immunogen	A synthetic peptide of human KISS1R
Purification	Purified by affinity chromatography
Conjugation	Unconjugated

Note

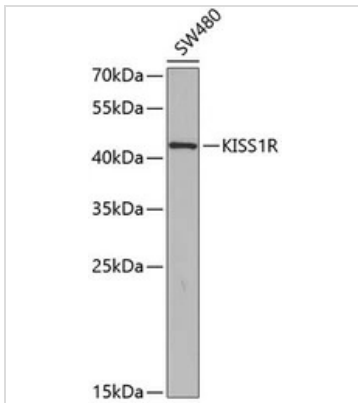
For laboratory research use only. Not for any clinical, therapeutic, or diagnostic use in humans or animals. Not for animal or human consumption.

Purchasers shall not, and agree not to enable third parties to, analyze, copy, reverse engineer or otherwise attempt to determine the structure or sequence of the product.



For full product information, images and publications, please visit our [website](#).

DATA IMAGES

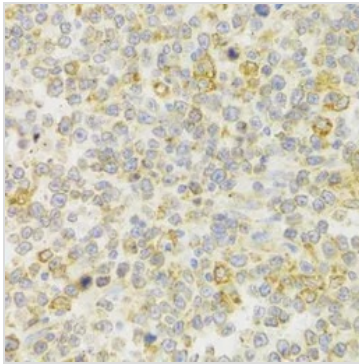


GTx54378 WB Image

WB analysis of SW480 cell lysate using GTx54378 GPR54 antibody.

Dilution : 1:350

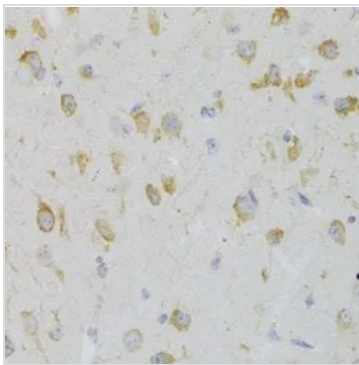
Loading : 25µg per lane



GTx54378 IHC-P Image

IHC-P analysis of human b cell lymphoma tissue using GTx54378 GPR54 antibody.

Dilution : 1:100



GTx54378 IHC-P Image

IHC-P analysis of mouse brain tissue using GTx54378 GPR54 antibody.

Dilution : 1:100



For full product information, images and publications, please visit our [website](https://www.genetex.com).