

CD14 antibody [Sa14-2]

Cat. No. GTX54397

Host	Rat
Clonality	Monoclonal
Isotype	IgG2a
Applications	WB, ICC/IF, FCM, IP, Functional Assay
Reactivity	Mouse

Package
50 µg

Applications

Application Note

*Optimal dilutions/concentrations should be determined by the researcher.

Suggested dilution	Recommended dilution
WB	Assay dependent
ICC/IF	Assay dependent
FCM	Assay dependent
IP	Assay dependent
Functional Assay	Assay dependent

Not tested in other applications.

Calculated MW 39 kDa. ([Note](#))

Properties

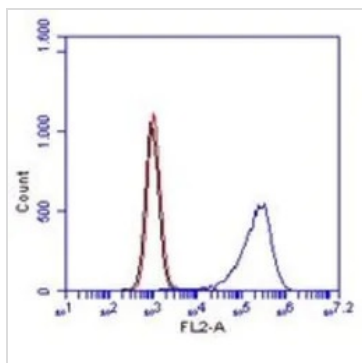
Form	Liquid
Buffer	Filter-sterilized PBS, 0.1% BSA
Preservative	No preservatives
Storage	Store as concentrated solution. Centrifuge briefly prior to opening vial. Store at 4°C.
Concentration	100 µg/ml (Please refer to the vial label for the specific concentration.)
Immunogen	CD14 transfectant
Purification	Purified IgG2a
Conjugation	Unconjugated

For full product information, images and publications, please visit our [website](#).

For laboratory research use only. Not for any clinical, therapeutic, or diagnostic use in humans or animals. Not for animal or human consumption.

Note

Purchasers shall not, and agree not to enable third parties to, analyze, copy, reverse engineer or otherwise attempt to determine the structure or sequence of the product.

DATA IMAGES

GTx54397 FCM Image

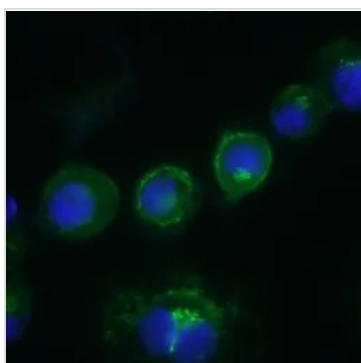
FACS analysis of 10^5 RAW264.7 cells using GTx54397 CD14 antibody [Sa14-2].

Black : No ab staining

Red : Isotype control

Blue : Primary antibody

Dilution : 1 µg/ml


GTx54397 ICC/IF Image

ICC/IF analysis of 1% paraformaldehyde-fixed RAW264.7 cells using GTx54397 CD14 antibody [Sa14-2].

Dilution : 2 µg/ml in PBS/BSA 3%



For full product information, images and publications, please visit our [website](#).