

CXCL10 / IP10 antibody [6D4]

Cat. No. GTX54425

Host	Mouse
Clonality	Monoclonal
Isotype	IgG2a
Applications	WB, ICC/IF, IHC-Fr, FCM, ELISA
Reactivity	Human

Package
100 µg

Applications

Application Note

*Optimal dilutions/concentrations should be determined by the researcher.

Suggested dilution	Recommended dilution
WB	Assay dependent
ICC/IF	Assay dependent
IHC-Fr	Assay dependent
FCM	Assay dependent
ELISA	Assay dependent

Note : Tissue was homogenized in loading sample buffer and subjected to SDS-PAGE.
Tissue sections were fixed 10 minutes in acetone and pretreated with avidin/biotin blocking kit.
For intracellular staining activated plasmacytoid dendritic cells were fixed with 2% paraformaldehyde and permeabilized with 0.5% saponin.
All steps were performed in presence of 0.5 M EDTA to avoid cell aggregation.

Not tested in other applications.

Calculated MW 11 kDa. ([Note](#))

Properties

Form	Liquid
Buffer	Filter-sterilized PBS, 0.1% BSA
Preservative	0.02% Sodium azide
Storage	Store as concentrated solution. Centrifuge briefly prior to opening vial. Store at 4°C.
Concentration	100 µg/ml (Please refer to the vial label for the specific concentration.)
Immunogen	Recombinant human IP-10
Purification	Protein G purified
Conjugation	Unconjugated



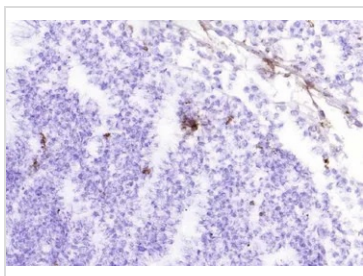
For full product information, images and publications, please visit our [website](#).

For laboratory research use only. Not for any clinical, therapeutic, or diagnostic use in humans or animals. Not for animal or human consumption.

Note

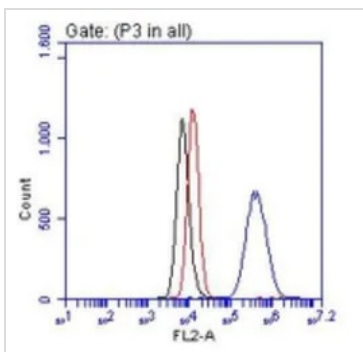
Purchasers shall not, and agree not to enable third parties to, analyze, copy, reverse engineer or otherwise attempt to determine the structure or sequence of the product.

DATA IMAGES



GTX54425 IHC-Fr Image

IHC-Fr analysis of human tonsil tissue section using GTX54425 CXCL10 / IP10 antibody [6D4].



GTX54425 FCM Image

FACS analysis of LPS stimulated HUVEC cells using GTX54425 CXCL10 / IP10 antibody [6D4].

Black : Cell only control

Red : Isotype control

Blue : Primary antibody

Antibody amount : 1 μ g / 2.5×10^5 cells



For full product information, images and publications, please visit our [website](#).