

## CD46 antibody [M177]

Cat. No. GTX54447

Host	Mouse
Clonality	Monoclonal
Isotype	IgG1
Applications	WB, IHC-Fr, FCM, IP, ELISA, Functional Assay
Reactivity	Human

Package  
50 µg

## Applications

## Application Note

\*Optimal dilutions/concentrations should be determined by the researcher.

Suggested dilution	Recommended dilution
WB	Assay dependent
IHC-Fr	Assay dependent
FCM	Assay dependent
IP	Assay dependent
ELISA	Assay dependent
Functional Assay	Assay dependent

**Note : A non-reduced sample treatment and SDS-page was used.**

**10<sup>7</sup> cells were lysed and immunoprecipitated with 25 µg M177 antibody and 25 µg protein G-sepharose**

Not tested in other applications.

Calculated MW	44 kDa. ( <a href="#">Note</a> )
Product Note	This antibody stains the extracellular domain of CD46. The monoclonal antibody M177 reacts with the SCR2 domain.

## Properties

Form	Liquid
Buffer	Filter-sterilized PBS, 0.1% BSA
Preservative	No preservatives
Storage	Store as concentrated solution. Centrifuge briefly prior to opening vial. Store at 4°C.
Concentration	100 µg/ml (Please refer to the vial label for the specific concentration.)
Immunogen	Purified MCP
Purification	Protein G purified



For full product information, images and publications, please visit our [website](#).

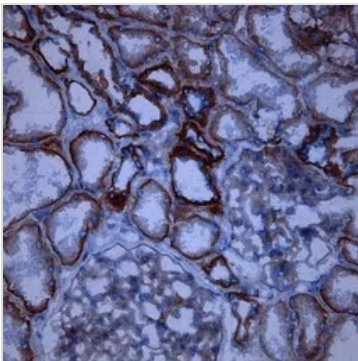
**Conjugation**

Unconjugated

**Note**

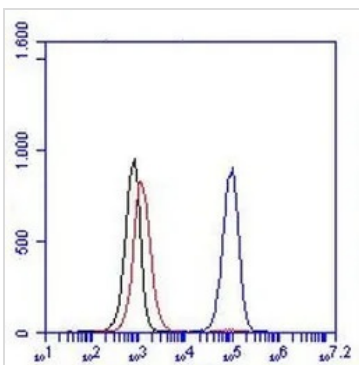
For laboratory research use only. Not for any clinical, therapeutic, or diagnostic use in humans or animals. Not for animal or human consumption.

Purchasers shall not, and agree not to enable third parties to, analyze, copy, reverse engineer or otherwise attempt to determine the structure or sequence of the product.

**DATA IMAGES**

**GTX54447 IHC-Fr Image**

IHC-Fr analysis of human kidney tissue sections using GTX54447 CD46 antibody [M177]. The antibody appeared to give a specific staining in glomeruli, juxtaglomerular apparatus and tubuli.

Dilution : 1:4000


**GTX54447 FCM Image**

FACS analysis of THP-1 cells using GTX54447 CD46 antibody [M177].

Red : Negative control

Black : Cells only control

Blue : Primary antibody

Antibody amount : 10 µg



For full product information, images and publications, please visit our [website](https://www.genetex.com).