

OLR1 / LOX-1 antibody [23C11]

Cat. No. GTX54456

Host	Mouse
Clonality	Monoclonal
Isotype	IgG1
Applications	ICC/IF, IHC-P, FCM, Neutralizing/Inhibition
Reactivity	Human, Mouse

Package

50 µg

Applications

Application Note

*Optimal dilutions/concentrations should be determined by the researcher.

Suggested dilution	Recommended dilution
ICC/IF	Assay dependent
IHC-P	Assay dependent
FCM	10 µg/ml
Neutralizing/Inhibition	Assay dependent

Note : Antibody totally prevented Hsp70 binding to LOX-1-CHO but not mock-transfected CHO cells.

Not tested in other applications.

Product Note

The monoclonal antibody 23C11 recognizes oxidized low-density lipoprotein receptor-1 (LOX-1). Monoclonal antibody 23C11 neutralizes LOX-1 and inhibits Hsp70 binding to dendritic cells and Hsp70-induced antigen cross-presentation. In vivo, targeting LOX-1 with a tumor antigen using anti-LOX-1 antibody 23C11 induces anti-tumor immunity.

Properties

Form	Liquid
Buffer	Filter-sterilized PBS, 0.1% BSA
Preservative	No preservatives
Storage	Store as concentrated solution. Centrifuge briefly prior to opening vial. Store at 4°C.
Concentration	100 µg/ml (Please refer to the vial label for the specific concentration.)
Immunogen	Fusion protein of extracellular domain (aa 71-273) of human LOX-1 with murine Fcγ1 (LOX-1-muFc) produced in PEAK cells
Purification	Purified IgG1
Conjugation	Unconjugated

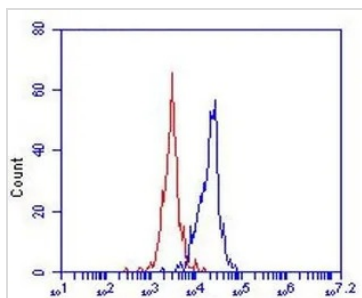


For full product information, images and publications, please visit our [website](#).

For laboratory research use only. Not for any clinical, therapeutic, or diagnostic use in humans or animals. Not for animal or human consumption.

Note

Purchasers shall not, and agree not to enable third parties to, analyze, copy, reverse engineer or otherwise attempt to determine the structure or sequence of the product.

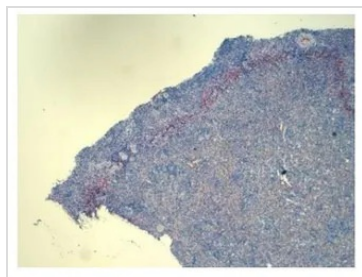
DATA IMAGES

GTX54456 FCM Image

FACS analysis of PBMC cells using GTX54456 OLR1 / LOX-1 antibody [23C11].

Red : Isotype control

Blue : Primary antibody

Dilution : 3 µg/ml


GTX54456 IHC-P Image

IHC-P analysis of human spleen tissue using GTX54456 OLR1 / LOX-1 antibody [23C11].

Dilution : 1:100



For full product information, images and publications, please visit our [website](https://www.genetex.com).