

CD163 antibody [RM3/1]

Cat. No. GTX54458

Host	Mouse
Clonality	Monoclonal
Isotype	IgG1
Applications	WB, ICC/IF, IHC-P, IHC-Fr, FCM, IP, Neutralizing/Inhibition
Reactivity	Human, Mouse, Monkey

References (6)

Package

50 µg

PRODUCT

Summary The monoclonal antibody RM3/1 can be used for macrophage phenotyping.

Applications

Application Note

*Optimal dilutions/concentrations should be determined by the researcher.

Suggested dilution	Recommended dilution
WB	0.4 µg/ml
ICC/IF	4 µg/ml
IHC-P	Assay dependent
IHC-Fr	Assay dependent
FCM	Assay dependent
IP	Assay dependent
Neutralizing/Inhibition	Assay dependent

Note : SDS-PAGE under non-denatured condition. Block blot with 1% skimmed milk for 1h and incubate with RM3/1 in 0.1%BSA/TBS for 1h. Detection of ~130 kDa product in spleens extracted in presence of NP-40 or in glucocorticoid-treated human monocytes. Cells were plated on coverslips and fixed in 4% paraformaldehyde for 2 mins. Permeabilization as well as no permeabilization is used. Block cells with 1% BSA for 30mins at 4°C 10 µg RM3/1 was covalently coupled to beads (with 20 mM dimethyl pimelimidate), blocked with 0.2 M glycine buffer for 2 hr and incubated with cell lysate for 2 hr. Reduction of CD69 expression by adding 2.5 µg/ml RM3/1 to 5x10⁵ human T-lymfocytes in presence of exogenous CD163.

Not tested in other applications.

Calculated MW	125 kDa. (Note)
Product Note	The RM3/1 antigen expression is restricted to human monocytes and macrophages that evolve in the late phase of inflammation, predominantly macrophages of healing tissue. We do not recommend use of this product for Rat,Guinea pig,Pig samples.

Properties

Form	Liquid
------	--------



For full product information, images and publications, please visit our [website](#).

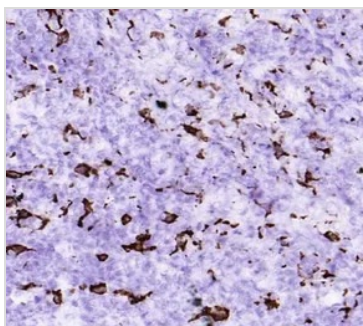
Buffer	Filter-sterilized PBS, 0.1% BSA
Preservative	0.02% Sodium azide
Storage	Store as concentrated solution. Centrifuge briefly prior to opening vial. Store at 4°C.
Concentration	100 µg/ml (Please refer to the vial label for the specific concentration.)
Immunogen	Human monocytes (epitope recognized SRCR domain 9)
Purification	Purified IgG1
Conjugation	Unconjugated

Note

For laboratory research use only. Not for any clinical, therapeutic, or diagnostic use in humans or animals. Not for animal or human consumption.

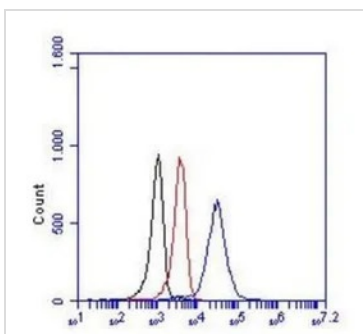
Purchasers shall not, and agree not to enable third parties to, analyze, copy, reverse engineer or otherwise attempt to determine the structure or sequence of the product.

DATA IMAGES



GTX54458 IHC-Fr Image

IHC-Fr analysis of human interfollicular tissue of tonsil section using GTX54458 CD163 antibody [RM3/1].



GTX54458 FCM Image

FACS analysis of THP-1 cells using GTX54458 CD163 antibody [RM3/1].

Black : Cell only control

Red : Isotype control

Blue : Primary antibody

Antibody amount : 2 µg / 2.5x10⁵ cells



For full product information, images and publications, please visit our [website](https://www.genetex.com).