

CDC42 antibody

Cat. No. GTX54514

Host	Rabbit
Clonality	Polyclonal
Isotype	IgG
Applications	WB, ICC/IF, IHC-P, IHC
Reactivity	Human, Mouse, Rat, Primate

Package
100 µg

Applications

Application Note

*Optimal dilutions/concentrations should be determined by the researcher.

Suggested dilution	Recommended dilution
WB	1:1000
ICC/IF	1:100
IHC-P	1:20
IHC	Assay dependent

Not tested in other applications.

Calculated MW 21 kDa. ([Note](#))

Properties

Form	Liquid
Buffer	PBS, 0.1% BSA, 30% Glycerol
Preservative	0.05% Sodium azide
Storage	Store as concentrated solution. Centrifuge briefly prior to opening vial. For short-term storage (1-2 weeks), store at 4°C. For long-term storage, aliquot and store at -20°C or below. Avoid multiple freeze-thaw cycles.
Concentration	1 mg/ml (Please refer to the vial label for the specific concentration.)
Immunogen	C-Terminal truncated human recombinant protein
Purification	Protein A purified
Conjugation	Unconjugated

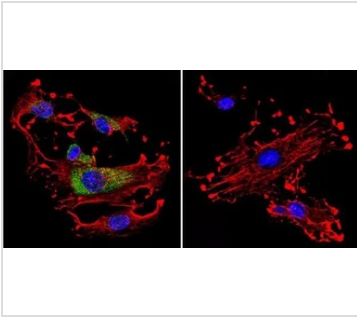
Note

For laboratory research use only. Not for any clinical, therapeutic, or diagnostic use in humans or animals. Not for animal or human consumption.

Purchasers shall not, and agree not to enable third parties to, analyze, copy, reverse engineer or otherwise attempt to determine the structure or sequence of the product.



For full product information, images and publications, please visit our [website](#).

DATA IMAGES

GTX54514 ICC/IF Image

ICC/IF analysis of C6 cells using GTX54514 CDC42 antibody. Cells were probed without (right) or with(left) an antibody.

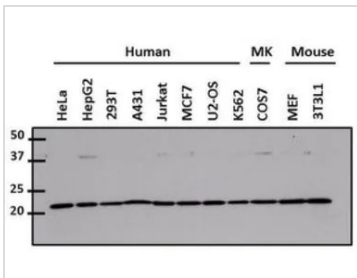
Green : Primary antibody

Blue : Nuclei

Red : Actin

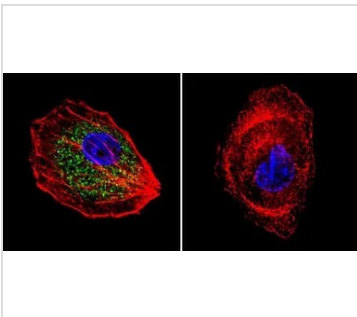
Fixation : formaldehyde

Dilution : 1:20 overnight at 4°C


GTX54514 WB Image

WB analysis of 50 ug of various whole cell lysate using GTX54514 CDC42 antibody.

Dilution : 1:1000


GTX54514 ICC/IF Image

ICC/IF analysis of HepG2 cells using GTX54514 CDC42 antibody. Cells were probed without (right) or with(left) an antibody.

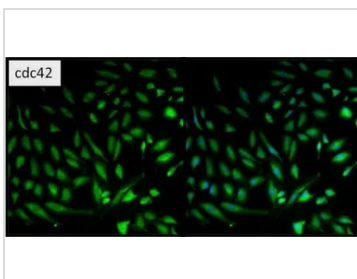
Green : Primary antibody

Blue : Nuclei

Red : Actin

Fixation : formaldehyde

Dilution : 1:200 overnight at 4°C


GTX54514 ICC/IF Image

ICC/IF analysis of HeLa cells using GTX54514 CDC42 antibody.

Green : Primary antibody

Blue : Nuclei

Fixation : Formalin

Permeabilization : 0.1% Triton X-100 in TBS for 10 minutes

Dilution : 1:100 for at least 1 hour at room temperature



For full product information, images and publications, please visit our [website](https://www.genetex.com).