

MARVELD2 antibody

Cat. No. GTX54515

Host	Rabbit
Clonality	Polyclonal
Isotype	IgG
Applications	WB, ICC/IF, FCM
Reactivity	Human, Mouse, Rat, Dog

Package
100 µg

Applications

Application Note

*Optimal dilutions/concentrations should be determined by the researcher.

Suggested dilution	Recommended dilution
WB	1-3 µg/mL
ICC/IF	2-4 µg/ml
FCM	3-5 µg/10 ⁶ cells

Not tested in other applications.

Calculated MW 64 kDa. ([Note](#))

Properties

Form	Liquid
Buffer	PBS
Preservative	0.1% Sodium azide
Storage	Store as concentrated solution. Centrifuge briefly prior to opening vial. For short-term storage (1-2 weeks), store at 4°C. For long-term storage, aliquot and store at -20°C or below. Avoid multiple freeze-thaw cycles.
Concentration	0.25 mg/ml (Please refer to the vial label for the specific concentration.)
Immunogen	Recombinant protein derived from the C-terminal region of the human Tricellulin protein
Purification	Purified by antigen-affinity chromatography
Conjugation	Unconjugated

Note

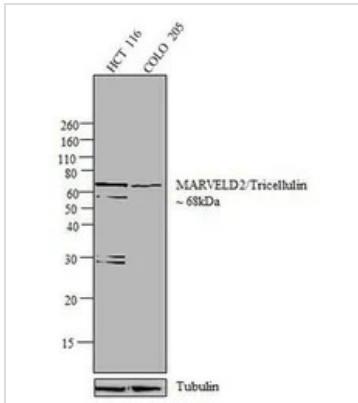
For laboratory research use only. Not for any clinical, therapeutic, or diagnostic use in humans or animals. Not for animal or human consumption.

Purchasers shall not, and agree not to enable third parties to, analyze, copy, reverse engineer or otherwise attempt to determine the structure or sequence of the product.



For full product information, images and publications, please visit our [website](#).

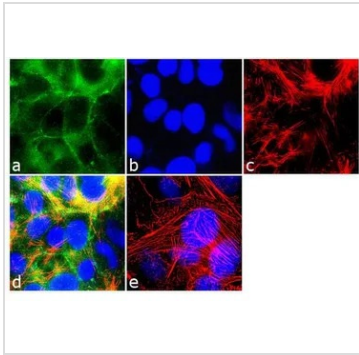
DATA IMAGES



GTX54515 WB Image

WB analysis of whole cell extracts (30 µg lysate) of HCT116 (Lane 1) and COLO205 (Lane 2) using GTX54515 MARVELD2 antibody.

Dilution : 1-2 µg/ml



GTX54515 ICC/IF Image

ICC/IF analysis of MCF-7 cells using GTX54515 MARVELD2 antibody. Panel e is a no primary antibody control.

Green : Primary antibody

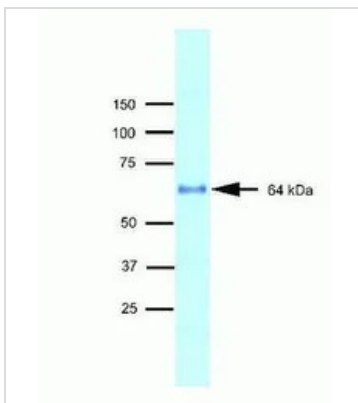
Blue : Nuclei

Red : Actin

Fixation : 4% paraformaldehyde

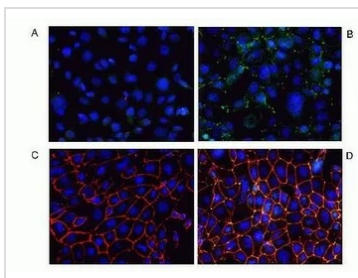
Permeabilization : 0.1% Triton, X-100 for 10 minutes

Dilution : 2 µg/ml in 0.1% BSA incubated for 3 hours at room temperature



GTX54515 WB Image

WB analysis of MDCK cell lysate using GTX54515 MARVELD2 antibody.



GTX54515 ICC/IF Image

ICC/IF analysis of MTE7b cells using GTX54515 MARVELD2 antibody.

Panel A : No antibody control

Panel B : MARVELD2 antibody

Panel C : Occludin antibody

Panel D : Merged B and C image



For full product information, images and publications, please visit our [website](https://www.genetex.com).