

## Vinculin (phospho Tyr100) antibody

Cat. No. GTX54517

Host	Rabbit
Clonality	Polyclonal
Isotype	IgG
Applications	WB, ICC/IF, FCM
Reactivity	Human, Mouse, Rat, Chicken

Package  
100 µl

## Applications

## Application Note

\*Optimal dilutions/concentrations should be determined by the researcher.

Suggested dilution	Recommended dilution
WB	1:1000
ICC/IF	1:250
FCM	1:20

Not tested in other applications.

Calculated MW 124 kDa. ([Note](#))

## Properties

Form	Liquid
Buffer	PBS, 0.1% BSA, 50% Glycerol
Preservative	0.05% Sodium azide
Storage	Store as concentrated solution. Centrifuge briefly prior to opening vial. For short-term storage (1-2 weeks), store at 4°C. For long-term storage, aliquot and store at -20°C or below. Avoid multiple freeze-thaw cycles.
Concentration	Batch dependent (Please refer to the vial label for the specific concentration.)
Immunogen	The antiserum was produced against a chemically synthesized phosphopeptide derived from a region of human vinculin that contains tyrosine 100. The sequence is conserved in mouse and chicken.
Purification	Purified by antigen-affinity chromatography
Conjugation	Unconjugated

## Note

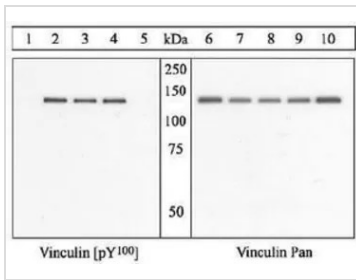
For laboratory research use only. Not for any clinical, therapeutic, or diagnostic use in humans or animals. Not for animal or human consumption.

Purchasers shall not, and agree not to enable third parties to, analyze, copy, reverse engineer or otherwise attempt to determine the structure or sequence of the product.



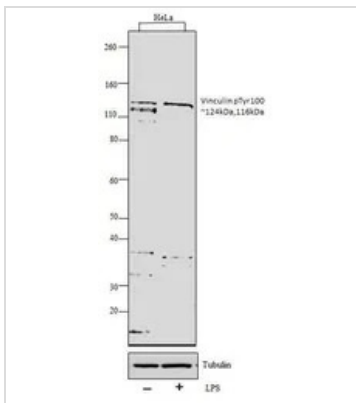
For full product information, images and publications, please visit our [website](#).

## DATA IMAGES



### GTX54517 WB Image

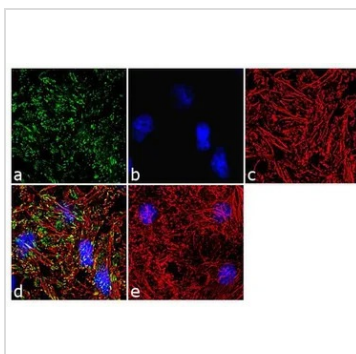
WB analysis of COS cells co-transfected with activated Src and His-tagged chicken vinculin cDNA which were either untreated (Lane 1 and 6) or treated with vanadate for 24 hr (Lane 2-5 and 7-10) using GTX54517 Vinculin (phospho Tyr100) antibody (left panel) or Vinculin antibody (right panel).



### GTX54517 WB Image

WB analysis of whole cell extracts (30 µg lysate) of HeLa (Lane 1) and HeLa treated with 100ng/ml of LPS for 20mins (Lane 2) using GTX54517 Vinculin (phospho Tyr100) antibody.

Dilution : 1:1000



### GTX54517 ICC/IF Image

ICC/IF analysis of HeLa cells using GTX54517 Vinculin (phospho Tyr100) antibody. Panel e is a no primary antibody control.

Green : Primary antibody

Blue : Nuclei

Red : Actin

Fixation : 4% paraformaldehyde

Permeabilization : 0.1% Triton X-100 for 10 minutes

Dilution : 1:250 dilution in 0.1% BSA and incubated for 3 hours at room temperature



For full product information, images and publications, please visit our [website](https://www.genetex.com).