

GATA3 antibody

Cat. No. GTX54527

Host	Rabbit
Clonality	Polyclonal
Isotype	IgG
Applications	WB, ICC/IF, IHC-P, FCM
Reactivity	Human

Package
100 µg

Applications

Application Note

*Optimal dilutions/concentrations should be determined by the researcher.

Suggested dilution	Recommended dilution
WB	1:500-1:1500
ICC/IF	1-2 µg/ml
IHC-P	1:50-1:500
FCM	3-5 µg/10 ⁶ cells

Not tested in other applications.

Calculated MW 48 kDa. ([Note](#))

Properties

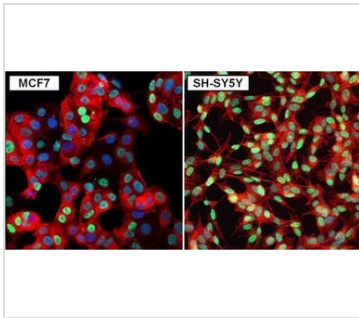
Form	Liquid
Buffer	PBS, 0.1% BSA, 30% Glycerol
Preservative	0.05% Sodium azide
Storage	Store as concentrated solution. Centrifuge briefly prior to opening vial. For short-term storage (1-2 weeks), store at 4°C. For long-term storage, aliquot and store at -20°C or below. Avoid multiple freeze-thaw cycles.
Concentration	1 mg/ml (Please refer to the vial label for the specific concentration.)
Immunogen	Purified partial recombinant GATA3 protein expressed in E. coli
Purification	Protein G purified
Conjugation	Unconjugated

Note

For laboratory research use only. Not for any clinical, therapeutic, or diagnostic use in humans or animals. Not for animal or human consumption.

Purchasers shall not, and agree not to enable third parties to, analyze, copy, reverse engineer or otherwise attempt to determine the structure or sequence of the product.

For full product information, images and publications, please visit our [website](#).

DATA IMAGES

GTX54527 ICC/IF Image

ICC/IF analysis of MCF7 (left panel) and SH-SY5Y cells (right panel) using GTX54527 GATA3 antibody.

Green : Primary antibody

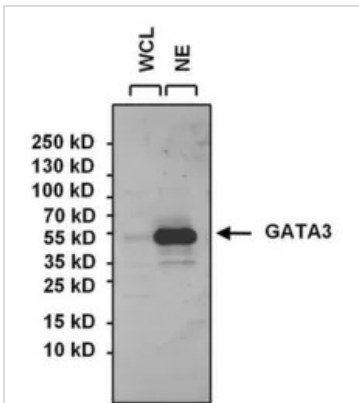
Blue : Nuclei

Red : Actin

Fixation : Formalin

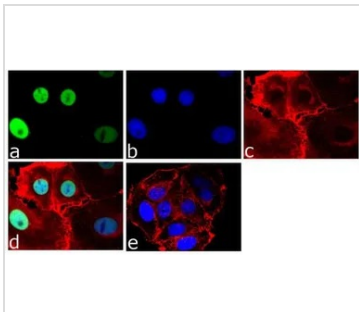
Permeabilization : 0.1% Triton X-100 in TBS for 10 minutes

Dilution : 1:50 for at least 1 hour at room temperature


GTX54527 WB Image

WB analysis of 15 ug of SH-SY5Y whole cell lysate (WCL), SH-SY5Y nuclear extract (NE) using GTX54527 GATA3 antibody.

Dilution : 1:1000


GTX54527 ICC/IF Image

ICC/IF analysis of MCF-7 cells using GTX54527 GATA3 antibody. Panel e is a no primary antibody control.

Green : Primary antibody

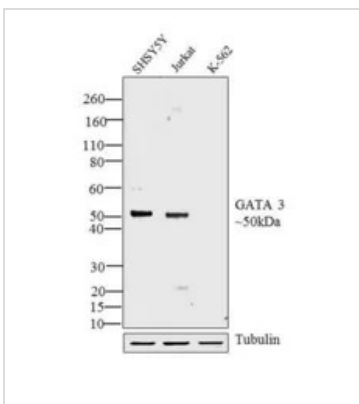
Blue : Nuclei

Red : Actin

Fixation : 4% paraformaldehyde

Permeabilization : 0.1% Triton, X-100 for 10 minutes

Dilution : 1 µg/ml in 0.1% BSA incubated for 3 hours at room temperature


GTX54527 WB Image

WB analysis of whole cell extracts (20 ug lysate) of SH-SY5Y (Lane 1), Jurkat (Lane 2) and K-562 (Lane 3) using GTX54527 GATA3 antibody.

Dilution : 1:500-1:1500



For full product information, images and publications, please visit our [website](https://www.genetex.com).