

Src (phospho Tyr416) antibody (Alexa Fluor 488)

Cat. No. GTX54529

Host	Rabbit
Clonality	Polyclonal
Isotype	IgG
Applications	WB, ICC/IF
Reactivity	Human, Mouse, Dog, Chicken

Package
100 µl

Applications

Application Note

*Optimal dilutions/concentrations should be determined by the researcher.

Suggested dilution	Recommended dilution
WB	Assay dependent
ICC/IF	Assay dependent

Not tested in other applications.

Calculated MW 60 kDa. ([Note](#))**Product Note** Based on sequence homology, this antibody may cross with other Src family members such as YES1 , FYN proteins when phosphorylated at the equivalent sites.

Properties

Form	Liquid
Buffer	PBS, 0.02% BSA
Preservative	0.05% Sodium azide
Storage	Store as concentrated solution. Centrifuge briefly prior to opening vial. For short-term storage (1-2 weeks), store at 4°C. For long-term storage, aliquot and store at -20°C or below. Avoid multiple freeze-thaw cycles. Protect from light.
Concentration	Batch dependent (Please refer to the vial label for the specific concentration.)
Immunogen	This antibody was produced against a chemically synthesized phosphopeptide derived from the region of Src that contains tyrosine 416. The antibody was affinity purified by sequential epitope-specific chromatography, then conjugated to Alexa Fluor 488. The Tyr418 of human Src is equivalent to Tyr416 of chicken Src.
Purification	Purified IgG
Conjugation	Alexa Fluor 488 Wavelength



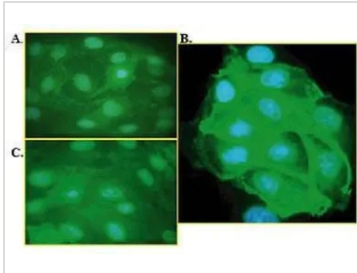
For full product information, images and publications, please visit our [website](#).

For laboratory research use only. Not for any clinical, therapeutic, or diagnostic use in humans or animals. Not for animal or human consumption.

Note

Purchasers shall not, and agree not to enable third parties to, analyze, copy, reverse engineer or otherwise attempt to determine the structure or sequence of the product.

DATA IMAGES



GTX54529 ICC/IF Image

ICC/IF analysis of MDCK cells were left untreated (A), stimulated with H₂O₂ (1 mM for 10 minutes) (B), or pretreated with PP2 prior to H₂O₂ stimulation (C) using GTX54529 Src (phospho Tyr416) antibody (Alexa Fluor 488).



For full product information, images and publications, please visit our [website](#).