

GATA4 antibody

Cat. No. GTX54530

Host	Rabbit
Clonality	Polyclonal
Isotype	IgG
Applications	WB, ICC/IF, IHC-P, FCM
Reactivity	Human, Mouse

Package
100 µg

Applications

Application Note

*Optimal dilutions/concentrations should be determined by the researcher.

Suggested dilution	Recommended dilution
WB	1:500-1:2000
ICC/IF	1:50-1:200
IHC-P	1:100-1:1000
FCM	3-5 µg/10 ⁶ cells

Not tested in other applications.

Calculated MW 45 kDa. ([Note](#))

Properties

Form	Liquid
Buffer	PBS, 0.1% BSA, 30% Glycerol
Preservative	0.05% Sodium azide
Storage	Store as concentrated solution. Centrifuge briefly prior to opening vial. For short-term storage (1-2 weeks), store at 4°C. For long-term storage, aliquot and store at -20°C or below. Avoid multiple freeze-thaw cycles.
Concentration	1 mg/ml (Please refer to the vial label for the specific concentration.)
Immunogen	Pooled peptides: RKEGIQTRKRPKNLNKSK and CKQDSWNSLVLADSHGDIITA
Purification	Purified by antigen-affinity chromatography
Conjugation	Unconjugated

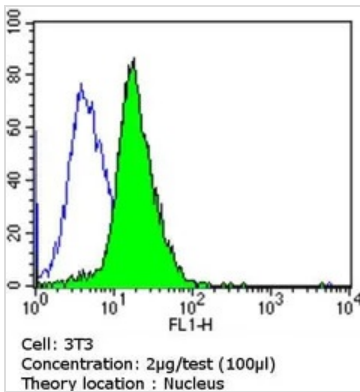
Note

For laboratory research use only. Not for any clinical, therapeutic, or diagnostic use in humans or animals. Not for animal or human consumption.

Purchasers shall not, and agree not to enable third parties to, analyze, copy, reverse engineer or otherwise attempt to determine the structure or sequence of the product.



For full product information, images and publications, please visit our [website](#).

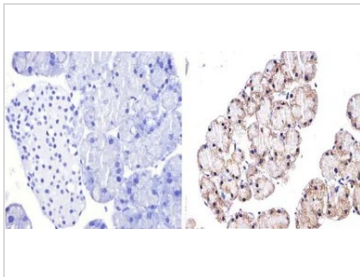
DATA IMAGES

GTX54530 FCM Image

FACS analysis of NIH/3T3 cells using GTX54530 GATA4 antibody compared to an isotype control (blue).

Dilution : 2 ug/test for 60 min at room temperature

Fixation : 2% paraformaldehyde

Permeabilization : 90% methanol and incubated for 10 minutes at room temperature


GTX54530 IHC-P Image

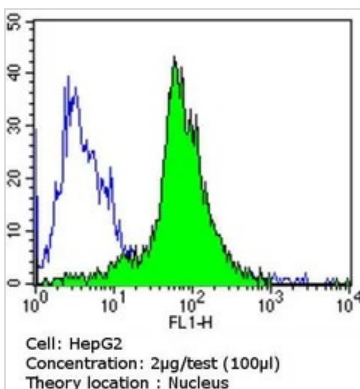
IHC-P analysis of mouse pancreas tissue using GTX54530 GATA4 antibody.

Right : Primary antibody

Left : Negative control without primary antibody

Antigen retrieval : 10mM sodium citrate (pH 6.0) microwaved for 8-15 min

Dilution : 1:500

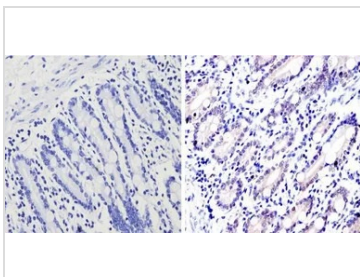

GTX54530 FCM Image

FACS analysis of HepG2 cells using GTX54530 GATA4 antibody compared to an isotype control (blue).

Dilution : 2 ug/test for 60 min at room temperature

Fixation : 2% paraformaldehyde

Permeabilization : 90% methanol and incubated for 10 minutes at room temperature


GTX54530 IHC-P Image

IHC-P analysis of human small intestine using GTX54530 GATA4 antibody.

Right : Primary antibody

Left : Negative control without primary antibody

Antigen retrieval : 10mM sodium citrate (pH 6.0) microwaved for 8-15 min

Dilution : 1:200



For full product information, images and publications, please visit our [website](http://www.genetex.com).