

PAX5 antibody

Cat. No. GTX54532

Host	Rabbit
Clonality	Polyclonal
Isotype	IgG
Applications	WB, ICC/IF, IHC-P, FCM, IP
Reactivity	Human, Mouse

References (1)

Package

100 µg

Applications

Application Note

*Optimal dilutions/concentrations should be determined by the researcher.

Suggested dilution	Recommended dilution
WB	1:500-1:2000
ICC/IF	1:20-1:200
IHC-P	1:50-1:500
FCM	1:50
IP	2-5 µg

Not tested in other applications.

Calculated MW 42 kDa. ([Note](#))

Properties

Form	Liquid
Buffer	PBS, 0.1% BSA, 30% Glycerol
Preservative	0.05% Sodium azide
Storage	Store as concentrated solution. Centrifuge briefly prior to opening vial. For short-term storage (1-2 weeks), store at 4°C. For long-term storage, aliquot and store at -20°C or below. Avoid multiple freeze-thaw cycles.
Concentration	1 mg/ml (Please refer to the vial label for the specific concentration.)
Immunogen	Purified internal fragment of human recombinant PAX5 expressed in E. coli
Purification	Protein G purified
Conjugation	Unconjugated



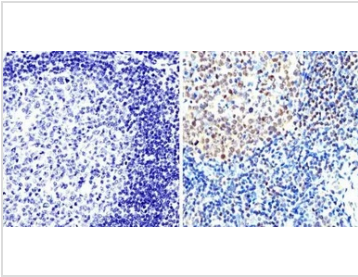
For full product information, images and publications, please visit our [website](#).

For laboratory research use only. Not for any clinical, therapeutic, or diagnostic use in humans or animals. Not for animal or human consumption.

Note

Purchasers shall not, and agree not to enable third parties to, analyze, copy, reverse engineer or otherwise attempt to determine the structure or sequence of the product.

DATA IMAGES



GTX54532 IHC-P Image

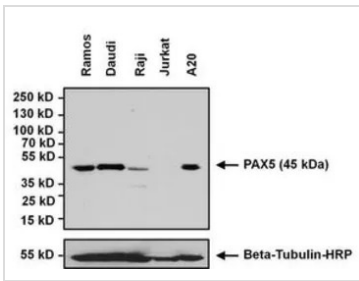
IHC-P analysis of human tonsil tissue using GTX54532 PAX5 antibody.

Right : Primary antibody

Left : Negative control without primary antibody

Antigen retrieval : 10mM sodium citrate (pH 6.0), microwaved for 8-15 min

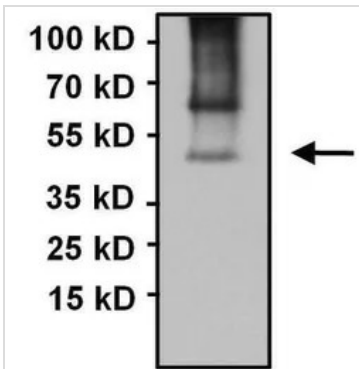
Dilution : 1:200



GTX54532 WB Image

WB analysis of 75µg of whole cell lysates from PAX5-expressing B cell lymphoma-derived cell lines, negative control Jurkat cells using GTX54532 PAX5 antibody.

Dilution : 1:1000

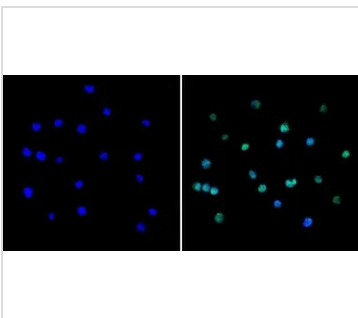


GTX54532 IP Image

IP analysis of Raji cell lysates using GTX54532 PAX5 antibody.

IP reaction : 2µg antibody / 750µg lysate

Dilution : 1:1000



GTX54532 ICC/IF Image

ICC/IF analysis of Ramos cells using GTX54532 PAX5 antibody. Cells were probed without (left) or with(right) an antibody.

Green : Primary antibody

Blue : Nuclei

Fixation : Formalin

Permeabilization : 0.1% Triton X-100 in TBS for 5-10 minute

Dilution : 1:100 and incubated overnight at 4°C



For full product information, images and publications, please visit our [website](https://www.genetex.com).