

## PAX7 antibody

Cat. No. GTX54533

Host	Rabbit
Clonality	Polyclonal
Isotype	IgG
Applications	WB, ICC/IF, IP
Reactivity	Human, Mouse

Package  
100 µg

## Applications

## Application Note

\*Optimal dilutions/concentrations should be determined by the researcher.

Suggested dilution	Recommended dilution
WB	1:1000 - 1:2000
ICC/IF	1:20-1:200
IP	3 µg

Not tested in other applications.

Calculated MW 55 kDa. ( [Note](#) )

## Product Note

This antibody detects a prominent ~54 kDa protein in human HeLa, MCF7, rhabdomyosarcoma and skeletal muscle satellite cells and a weaker ~57 kDa protein in HeLa, rhabdomyosarcoma and skeletal muscle satellite cells. The ~57 kDa band seems to be enriched in immunoprecipitations from HeLa lysate, suggesting a bias for the larger isoform in this application. Weak unknown bands of lower molecular weight and at ~110-130 kDa are also detected. Specificity of the antibody was also confirmed in HeLa cells overexpressing full length PAX7.

## Properties

Form	Liquid
Buffer	PBS, 0.1% BSA, 30% Glycerol
Preservative	0.05% Sodium azide
Storage	Store as concentrated solution. Centrifuge briefly prior to opening vial. For short-term storage (1-2 weeks), store at 4°C. For long-term storage, aliquot and store at -20°C or below. Avoid multiple freeze-thaw cycles.
Concentration	1 mg/ml (Please refer to the vial label for the specific concentration.)
Immunogen	Purified internal fragment of human recombinant PAX7 expressed in E. coli.
Purification	Protein G purified
Conjugation	Unconjugated



For full product information, images and publications, please visit our [website](#).

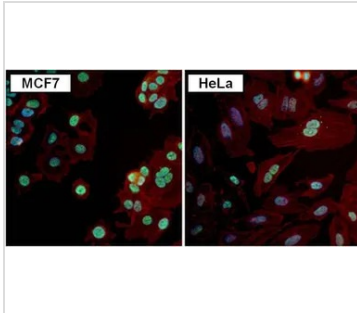
Date 2026 / 01 / 31 Page 1 of 2

For laboratory research use only. Not for any clinical, therapeutic, or diagnostic use in humans or animals. Not for animal or human consumption.

## Note

Purchasers shall not, and agree not to enable third parties to, analyze, copy, reverse engineer or otherwise attempt to determine the structure or sequence of the product.

## DATA IMAGES



### GTX54533 ICC/IF Image

ICC/IF analysis of MCF7 and HeLa cells using GTX54533 PAX7 antibody.

Green : Primary antibody

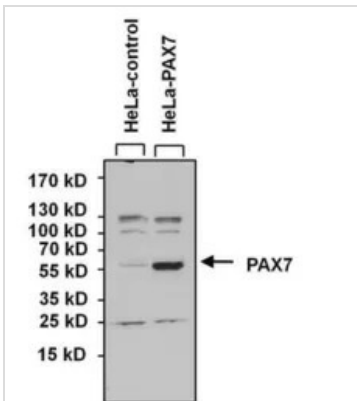
Blue : Nuclei

Red : Actin

Fixation : Formalin

Permeabilization : 0.1% Triton X-100 in TBS for 10 minutes

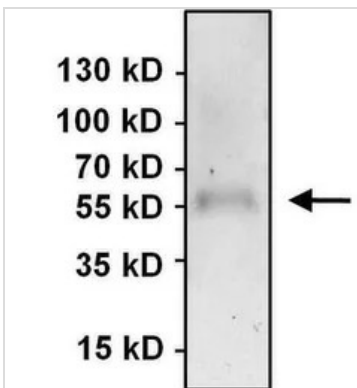
Dilution : 1:100 for at least 1 hour at room temperature



### GTX54533 WB Image

WB analysis of 50µg of HeLa lysate overexpressing PAX7 (right lane) or empty vector control (left lane) using GTX54533 PAX7 antibody.

Dilution : 1:1000



### GTX54533 IP Image

IP analysis of HeLa cell lysates using GTX54533 PAX7 antibody.

IP reaction : 3µg antibody / 500µg lysate

Dilution : 1:1000



For full product information, images and publications, please visit our [website](https://www.genetex.com).