

## Syndecan-1 / CD138 antibody

**Cat. No. GTX54537**

|                     |                          |
|---------------------|--------------------------|
| <b>Host</b>         | Rabbit                   |
| <b>Clonality</b>    | Polyclonal               |
| <b>Isotype</b>      | IgG                      |
| <b>Applications</b> | WB, ICC/IF, IHC-P, ELISA |
| <b>Reactivity</b>   | Human, Mouse, Rat        |

**Package**  
100 µg

## Applications

**Application Note**

\*Optimal dilutions/concentrations should be determined by the researcher.

| Suggested dilution | Recommended dilution |
|--------------------|----------------------|
| WB                 | 1-3 µg/mL            |
| ICC/IF             | Assay dependent      |
| IHC-P              | 1:20-1:200           |
| ELISA              | 0.1-1 µg/mL          |

Not tested in other applications.

**Calculated MW** 32 kDa. ( [Note](#) )

## Properties

|                      |  |
|----------------------|--|
| <b>Form</b>          | Liquid   |
| <b>Buffer</b>        | PBS  |
| <b>Preservative</b>  | 0.1% Sodium azide  |
| <b>Storage</b>       | Store as concentrated solution. Centrifuge briefly prior to opening vial. For short-term storage (1-2 weeks), store at 4°C. For long-term storage, aliquot and store at -20°C or below. Avoid multiple freeze-thaw cycles. |
| <b>Concentration</b> | 0.25 mg/ml (Please refer to the vial label for the specific concentration.)  |
| <b>Immunogen</b>     | Synthetic peptide derived from an internal region of the human Syndecan-1 protein  |
| <b>Purification</b>  | Purified by antigen-affinity chromatography  |
| <b>Conjugation</b>   | Unconjugated   |

**Note**

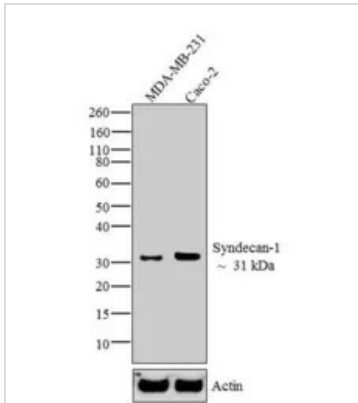
For laboratory research use only. Not for any clinical, therapeutic, or diagnostic use in humans or animals. Not for animal or human consumption.

Purchasers shall not, and agree not to enable third parties to, analyze, copy, reverse engineer or otherwise attempt to determine the structure or sequence of the product.



For full product information, images and publications, please visit our [website](#).

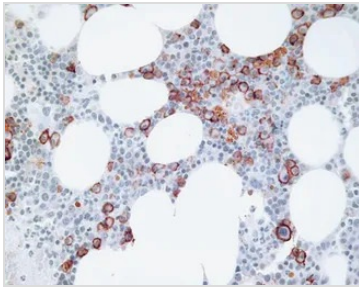
## DATA IMAGES



### GTx54537 WB Image

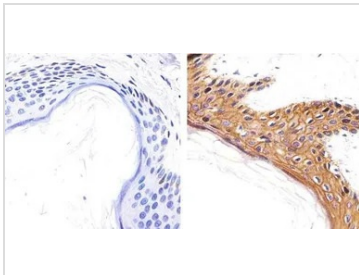
WB analysis of 20 µg of MDA-MB-231 (lane1) and Caco-2 (lane2) lysate using GTx54537 Syndecan-1 / CD138 antibody.

Dilution : 1-2 µg/ml



### GTx54537 IHC-P Image

IHC-P analysis of human bone marrow tissue using GTx54537 Syndecan-1 / CD138 antibody.



### GTx54537 IHC-P Image

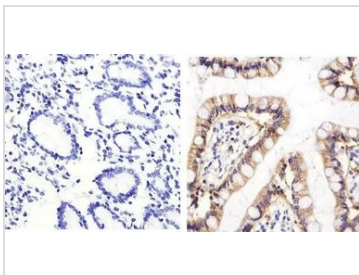
IHC-P analysis of human skin tissue using GTx54537 Syndecan-1 / CD138 antibody.

Right : Primary antibody

Left : Negative control without primary antibody

Antigen retrieval : 10mM sodium citrate (pH 6.0), microwaved for 8-15 min

Dilution : 1:100



### GTx54537 IHC-P Image

IHC-P analysis of human small intestine tissue using GTx54537 Syndecan-1 / CD138 antibody.

Right : Primary antibody

Left : Negative control without primary antibody

Antigen retrieval : 10mM sodium citrate (pH 6.0), microwaved for 8-15 min

Dilution : 1:100



For full product information, images and publications, please visit our [website](https://www.genetex.com).