

## Syndecan-1 / CD138 antibody

Cat. No. GTX54537

Host	Rabbit
Clonality	Polyclonal
Isotype	IgG
Applications	WB, ICC/IF, IHC-P, ELISA
Reactivity	Human, Mouse, Rat

Package  
100 µg

## Applications

## Application Note

\*Optimal dilutions/concentrations should be determined by the researcher.

Suggested dilution	Recommended dilution
WB	1-3 µg/mL
ICC/IF	Assay dependent
IHC-P	1:20-1:200
ELISA	0.1-1 µg/mL

Not tested in other applications.

Calculated MW 32 kDa. ( [Note](#) )

## Properties

Form	Liquid
Buffer	PBS
Preservative	0.1% Sodium azide
Storage	Store as concentrated solution. Centrifuge briefly prior to opening vial. For short-term storage (1-2 weeks), store at 4°C. For long-term storage, aliquot and store at -20°C or below. Avoid multiple freeze-thaw cycles.
Concentration	0.25 mg/ml (Please refer to the vial label for the specific concentration.)
Immunogen	Synthetic peptide derived from an internal region of the human Syndecan-1 protein
Purification	Purified by antigen-affinity chromatography
Conjugation	Unconjugated

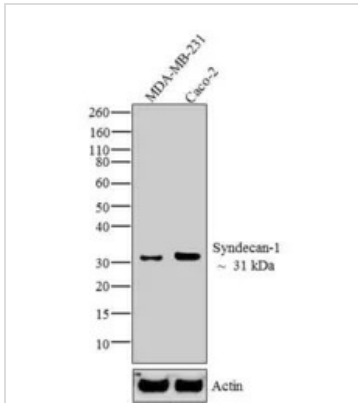
## Note

For laboratory research use only. Not for any clinical, therapeutic, or diagnostic use in humans or animals. Not for animal or human consumption.

Purchasers shall not, and agree not to enable third parties to, analyze, copy, reverse engineer or otherwise attempt to determine the structure or sequence of the product.

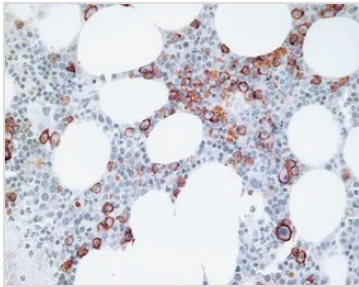


For full product information, images and publications, please visit our [website](#).

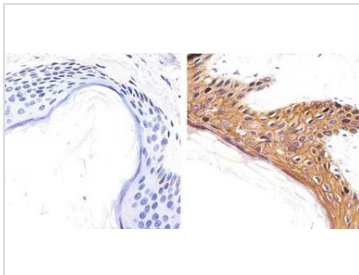
**DATA IMAGES**

**GTX54537 WB Image**

WB analysis of 20 µg of MDA-MB-231 (lane1) and Caco-2 (lane2) lysate using GTX54537 Syndecan-1 / CD138 antibody.

Dilution : 1-2 µg/ml


**GTX54537 IHC-P Image**

IHC-P analysis of human bone marrow tissue using GTX54537 Syndecan-1 / CD138 antibody.


**GTX54537 IHC-P Image**

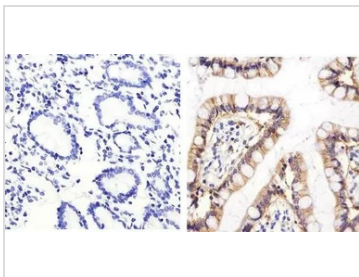
IHC-P analysis of human skin tissue using GTX54537 Syndecan-1 / CD138 antibody.

Right : Primary antibody

Left : Negative control without primary antibody

Antigen retrieval : 10mM sodium citrate (pH 6.0), microwaved for 8-15 min

Dilution : 1:100


**GTX54537 IHC-P Image**

IHC-P analysis of human small intestine tissue using GTX54537 Syndecan-1 / CD138 antibody.

Right : Primary antibody

Left : Negative control without primary antibody

Antigen retrieval : 10mM sodium citrate (pH 6.0), microwaved for 8-15 min

Dilution : 1:100



For full product information, images and publications, please visit our [website](https://www.genetex.com).