

Claudin 1 antibody

Cat. No. GTX54539

Host	Rabbit
Clonality	Polyclonal
Isotype	IgG
Applications	WB, ICC/IF, IHC-P, IHC-Fr, IP, ELISA, IHC
Reactivity	Human, Mouse, Rat, Dog

References (5)

Package

100 µg

Applications

Application Note

*Optimal dilutions/concentrations should be determined by the researcher.

Suggested dilution	Recommended dilution
WB	1-2 µg/mL
ICC/IF	15-20 µg/mL
IHC-P	1:10-1:100
IHC-Fr	Assay dependent
IP	Assay dependent
ELISA	0.1-1 µg/ml
IHC	Assay dependent

Not tested in other applications.

Calculated MW 23 kDa. ([Note](#))

Properties

Form	Liquid
Buffer	PBS
Preservative	0.1% Sodium azide
Storage	Store as concentrated solution. Centrifuge briefly prior to opening vial. For short-term storage (1-2 weeks), store at 4°C. For long-term storage, aliquot and store at -20°C or below. Avoid multiple freeze-thaw cycles.
Concentration	0.25 mg/ml (Please refer to the vial label for the specific concentration.)
Immunogen	A synthetic peptide derived from the C-terminus of the human/mouse Claudin-1 protein.
Purification	Purified by antigen-affinity chromatography
Conjugation	Unconjugated

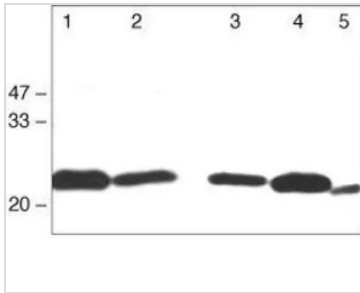


For full product information, images and publications, please visit our [website](#).

For laboratory research use only. Not for any clinical, therapeutic, or diagnostic use in humans or animals. Not for animal or human consumption.

Note
 Purchasers shall not, and agree not to enable third parties to, analyze, copy, reverse engineer or otherwise attempt to determine the structure or sequence of the product.

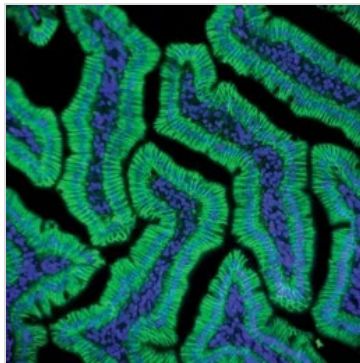
DATA IMAGES



GTX54539 WB Image

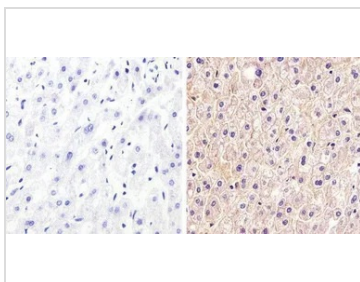
WB analysis of various lysates using GTX54539 Claudin 1 antibody.

- Lane 1 : Rat liver tissue lysate
- Lane 2 : Rat kidney tissue lysate
- Lane 3 : MDCK whole cell lysate
- Lane 4 : Caco-2 whole cell lysate
- Lane 5 : Mouse hepatocytes



GTX54539 IHC-Fr Image

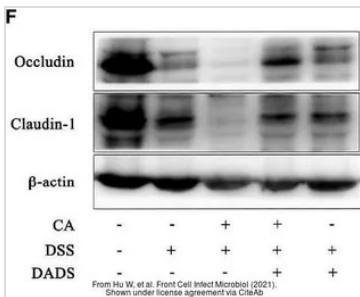
IHC-Fr analysis of rat small intestine tissue using GTX54539 Claudin 1 antibody.



GTX54539 IHC-P Image

IHC-P analysis of human liver tissue using GTX54539 Claudin 1 antibody.

- Right : Primary antibody
- Left : Negative control without primary antibody
- Antigen retrieval : 10mM sodium citrate (pH 6.0), microwaved for 8-15 min
- Dilution : 1:20



GTX54539 WB Image

The data was published in the 2021 in Front Cell Infect Microbiol. [PMID: 35071031](https://doi.org/10.3389/fcimb.2021.635071)



For full product information, images and publications, please visit our [website](https://www.genetex.com).