

## ARF6 antibody

Cat. No. GTX54540

<b>Host</b>	Rabbit
<b>Clonality</b>	Polyclonal
<b>Isotype</b>	IgG
<b>Applications</b>	WB, ICC/IF, IHC-P
<b>Reactivity</b>	Human, Mouse, Primate

Package  
100 µg

## Applications

## Application Note

\*Optimal dilutions/concentrations should be determined by the researcher.

Suggested dilution	Recommended dilution
WB	1:1000
ICC/IF	1:20-1:100
IHC-P	1:20-100

Not tested in other applications.

**Calculated MW** 20 kDa. ([Note](#))

## Properties

<b>Form</b>	Liquid
<b>Buffer</b>	PBS, 0.1% BSA, 30% Glycerol
<b>Preservative</b>	0.05% Sodium azide
<b>Storage</b>	Store as concentrated solution. Centrifuge briefly prior to opening vial. For short-term storage (1-2 weeks), store at 4°C. For long-term storage, aliquot and store at -20°C or below. Avoid multiple freeze-thaw cycles.
<b>Concentration</b>	1 mg/ml (Please refer to the vial label for the specific concentration.)
<b>Immunogen</b>	C-terminal human recombinant protein fragment
<b>Purification</b>	Protein A purified
<b>Conjugation</b>	Unconjugated

## Note

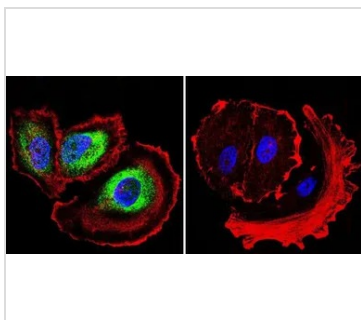
For laboratory research use only. Not for any clinical, therapeutic, or diagnostic use in humans or animals. Not for animal or human consumption.

Purchasers shall not, and agree not to enable third parties to, analyze, copy, reverse engineer or otherwise attempt to determine the structure or sequence of the product.



For full product information, images and publications, please visit our [website](#).

DATA IMAGES



**GTX54540 ICC/IF Image**

ICC/IF analysis of MCF-7 cells using GTX54540 ARF6 antibody. Cells were probed without (right) or with(left) an antibody.

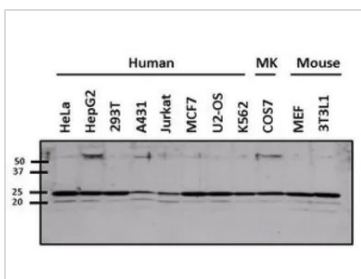
Green : Primary antibody

Blue : Nuclei

Red : Actin

Fixation : formaldehyde

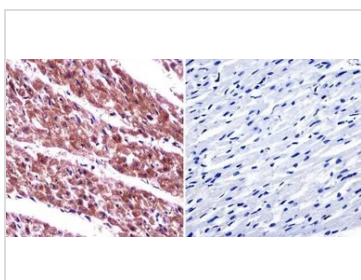
Dilution : 1:20 overnight at 4°C



**GTX54540 WB Image**

WB analysis of 50 ug of various whole cell lysate using GTX54540 ARF6 antibody.

Dilution : 1:1000



**GTX54540 IHC-P Image**

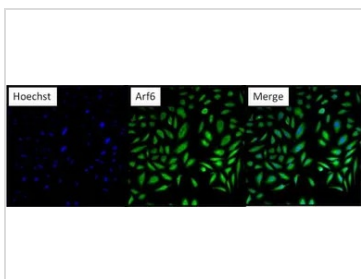
IHC-P analysis of human heart tissue using GTX54540 ARF6 antibody.

Left : Primary antibody

Right : Negative control without primary antibody

Antigen retrieval : heat induced antigen retrieval was performed using 10mM sodium citrate (pH6.0) buffer, microwaved for 8-15 minutes

Dilution : 1:20



**GTX54540 ICC/IF Image**

ICC/IF analysis of HeLa cells using GTX54540 ARF6 antibody.

Fixation : Formalin

Permeabilization : 0.1% Triton X-100 in TBS for 10 minutes

Dilution : 1:100 for at least 1 hour at room temperature



For full product information, images and publications, please visit our [website](#).