

PPP2R2A antibody

Cat. No. GTX54580

| | |
|---------------------|-------------------|
| Host | Rabbit |
| Clonality | Polyclonal |
| Isotype | IgG |
| Applications | WB, IHC-P |
| Reactivity | Human, Mouse, Rat |

Package
100 µl

Applications

Application Note

*Optimal dilutions/concentrations should be determined by the researcher.

| Suggested dilution | Recommended dilution |
|--------------------|----------------------|
| WB | 1:500 - 1:2000 |
| IHC-P | 1:50 - 1:200 |

Not tested in other applications.

Calculated MW 52 kDa. ([Note](#))

Properties

| | |
|----------------------|--|
| Form | Liquid |
| Buffer | PBS, 50% Glycerol |
| Preservative | 0.02% Sodium azide |
| Storage | Store as concentrated solution. Centrifuge briefly prior to opening vial. For short-term storage (1-2 weeks), store at 4°C. For long-term storage, aliquot and store at -20°C or below. Avoid multiple freeze-thaw cycles. |
| Concentration | Batch dependent (Please refer to the vial label for the specific concentration.) |
| Immunogen | Recombinant fusion protein containing a sequence corresponding to amino acids 1-447 of human PPP2R2A (NP_002708.1). |
| Purification | Purified by affinity chromatography |
| Conjugation | Unconjugated |

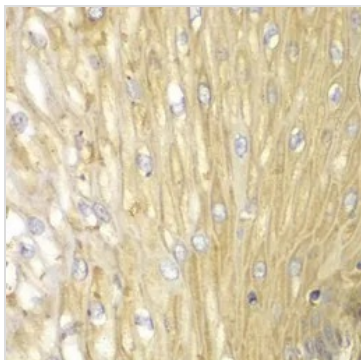
Note

For laboratory research use only. Not for any clinical, therapeutic, or diagnostic use in humans or animals. Not for animal or human consumption.

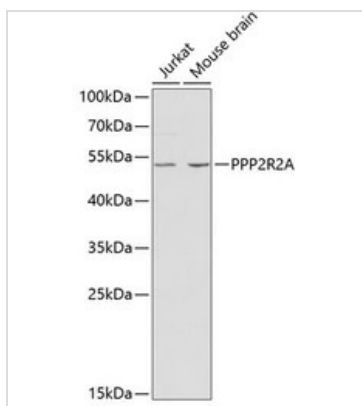
Purchasers shall not, and agree not to enable third parties to, analyze, copy, reverse engineer or otherwise attempt to determine the structure or sequence of the product.



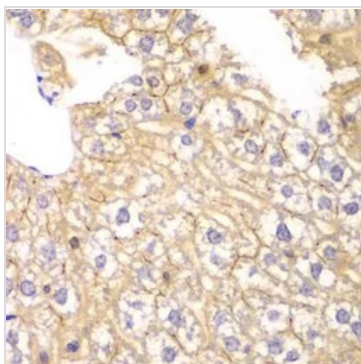
For full product information, images and publications, please visit our [website](#).

DATA IMAGES

GTx54580 IHC-P Image

IHC-P analysis of human esophagus tissue using GTx54580 PPP2R2A antibody.
Dilution : 1:100


GTx54580 WB Image

WB analysis of various sample lysates using GTx54580 PPP2R2A antibody.
Dilution : 1:1000
Loading : 25µg per lane


GTx54580 IHC-P Image

IHC-P analysis of mouse liver tissue using GTx54580 PPP2R2A antibody.
Dilution : 1:100



For full product information, images and publications, please visit our [website](https://www.genetex.com).