

PPP2R4 antibody

Cat. No. GTX54592

Host	Rabbit
Clonality	Polyclonal
Isotype	IgG
Applications	ICC/IF, IHC-P
Reactivity	Human, Mouse, Rat

Package
100 µl

Applications

Application Note

*Optimal dilutions/concentrations should be determined by the researcher.

Suggested dilution	Recommended dilution
ICC/IF	1:50 - 1:200
IHC-P	1:50 - 1:200

Not tested in other applications.

Properties

Form	Liquid
Buffer	PBS, 50% Glycerol
Preservative	0.02% Sodium azide
Storage	Store as concentrated solution. Centrifuge briefly prior to opening vial. For short-term storage (1-2 weeks), store at 4°C. For long-term storage, aliquot and store at -20°C or below. Avoid multiple freeze-thaw cycles.
Concentration	Batch dependent (Please refer to the vial label for the specific concentration.)
Immunogen	Recombinant fusion protein containing a sequence corresponding to amino acids 1-323 of human PPP2R4 (NP_821067.1).
Purification	Purified by affinity chromatography
Conjugation	Unconjugated

Note

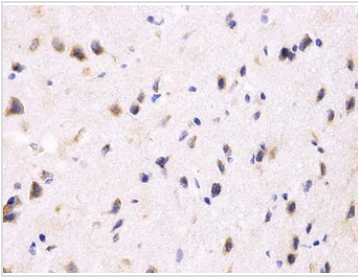
For laboratory research use only. Not for any clinical, therapeutic, or diagnostic use in humans or animals. Not for animal or human consumption.

Purchasers shall not, and agree not to enable third parties to, analyze, copy, reverse engineer or otherwise attempt to determine the structure or sequence of the product.

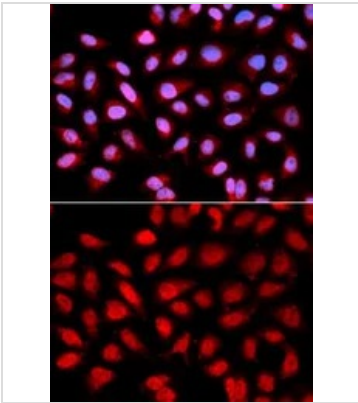


For full product information, images and publications, please visit our [website](#).

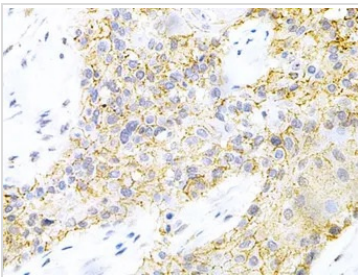
DATA IMAGES

**GTX54592 IHC-P Image**

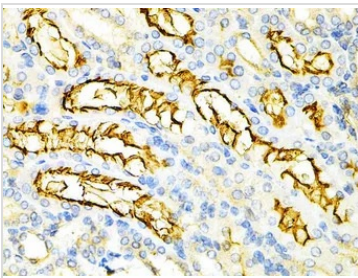
IHC-P analysis of rat brain tissue using GTX54592 PPP2R4 antibody.
Dilution : 1:200

**GTX54592 ICC/IF Image**

ICC/IF analysis of U2OS cells using GTX54592 PPP2R4 antibody.
Blue : DAPI

**GTX54592 IHC-P Image**

IHC-P analysis of human esophageal cancer tissue using GTX54592 PPP2R4 antibody.
Dilution : 1:200

**GTX54592 IHC-P Image**

IHC-P analysis of mouse kidney tissue using GTX54592 PPP2R4 antibody.
Dilution : 1:200



For full product information, images and publications, please visit our [website](#).