

# PLCB1 antibody

**Cat. No. GTX54594**

<b>Host</b>	Rabbit
<b>Clonality</b>	Polyclonal
<b>Isotype</b>	IgG
<b>Applications</b>	WB, ICC/IF, IHC-P
<b>Reactivity</b>	Human, Rat

**Package**  
100 µl

## Applications

### Application Note

\*Optimal dilutions/concentrations should be determined by the researcher.

Suggested dilution	Recommended dilution
WB	1:500 - 1:2000
ICC/IF	1:50 - 1:200
IHC-P	1:50 - 1:200

Not tested in other applications.

**Calculated MW** 139 kDa. ([Note](#))

## Properties

<b>Form</b>	Liquid
<b>Buffer</b>	PBS, 50% Glycerol
<b>Preservative</b>	0.02% Sodium azide
<b>Storage</b>	Store as concentrated solution. Centrifuge briefly prior to opening vial. For short-term storage (1-2 weeks), store at 4°C. For long-term storage, aliquot and store at -20°C or below. Avoid multiple freeze-thaw cycles.
<b>Concentration</b>	Batch dependent (Please refer to the vial label for the specific concentration.)
<b>Immunogen</b>	Recombinant fusion protein containing a sequence corresponding to amino acids 917-1216 of human PLCB1 (NP_056007.1).
<b>Purification</b>	Purified by affinity chromatography
<b>Conjugation</b>	Unconjugated

### Note

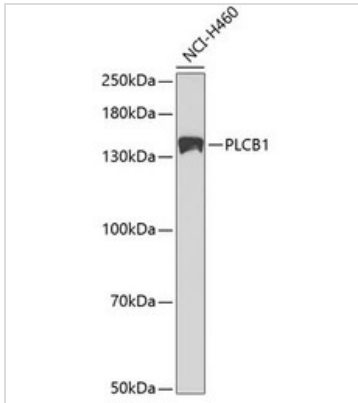
For laboratory research use only. Not for any clinical, therapeutic, or diagnostic use in humans or animals. Not for animal or human consumption.

Purchasers shall not, and agree not to enable third parties to, analyze, copy, reverse engineer or otherwise attempt to determine the structure or sequence of the product.



For full product information, images and publications, please visit our [website](#).

## DATA IMAGES

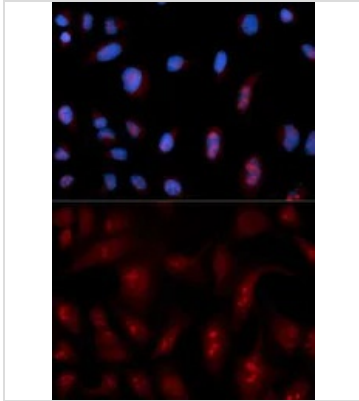


### GTX54594 WB Image

WB analysis of NCI-H460 cell lysate using GTX54594 PLCB1 antibody.

Dilution : 1:1000

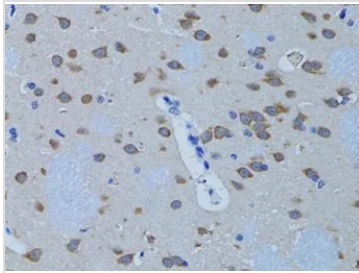
Loading : 25µg per lane



### GTX54594 ICC/IF Image

ICC/IF analysis of U2OS cells using GTX54594 PLCB1 antibody.

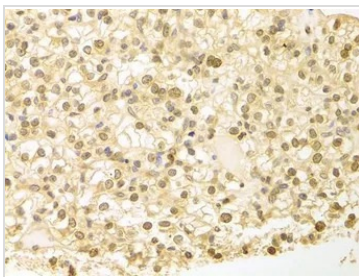
Blue : DAPI



### GTX54594 IHC-P Image

IHC-P analysis of rat brain tissue using GTX54594 PLCB1 antibody.

Dilution : 1:100



### GTX54594 IHC-P Image

IHC-P analysis of human kidney cancer tissue using GTX54594 PLCB1 antibody.

Dilution : 1:100



For full product information, images and publications, please visit our [website](https://www.genetex.com).