

POLR2D antibody

Cat. No. GTX54623

Host	Rabbit
Clonality	Polyclonal
Isotype	IgG
Applications	WB, ICC/IF, IP
Reactivity	Human, Mouse

Package
100 µl

Applications

Application Note

*Optimal dilutions/concentrations should be determined by the researcher.

Suggested dilution	Recommended dilution
WB	1:500 - 1:2000
ICC/IF	1:10 - 1:100
IP	1:50 - 1:200

Not tested in other applications.

Calculated MW 16 kDa. ([Note](#))

Properties

Form	Liquid
Buffer	PBS, 50% Glycerol
Preservative	0.02% Sodium azide
Storage	Store as concentrated solution. Centrifuge briefly prior to opening vial. For short-term storage (1-2 weeks), store at 4°C. For long-term storage, aliquot and store at -20°C or below. Avoid multiple freeze-thaw cycles.
Concentration	Batch dependent (Please refer to the vial label for the specific concentration.)
Immunogen	Recombinant fusion protein containing a sequence corresponding to amino acids 1-142 of human POLR2D (NP_004796.1).
Purification	Purified by affinity chromatography
Conjugation	Unconjugated

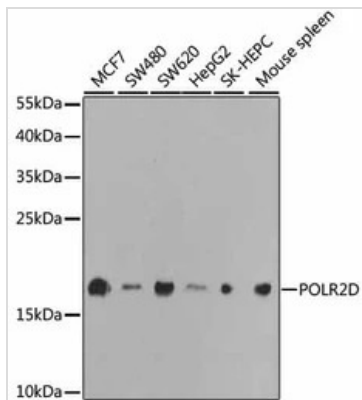
Note

For laboratory research use only. Not for any clinical, therapeutic, or diagnostic use in humans or animals. Not for animal or human consumption.

Purchasers shall not, and agree not to enable third parties to, analyze, copy, reverse engineer or otherwise attempt to determine the structure or sequence of the product.



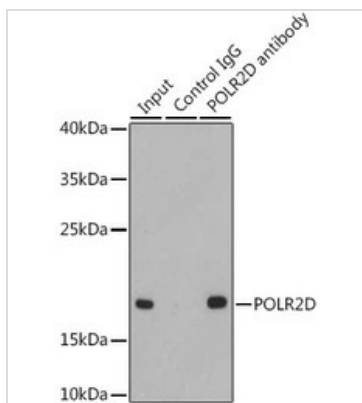
For full product information, images and publications, please visit our [website](#).

DATA IMAGES

GTX54623 WB Image

WB analysis of various sample lysates using GTX54623 POLR2D antibody.

Dilution : 1:1000

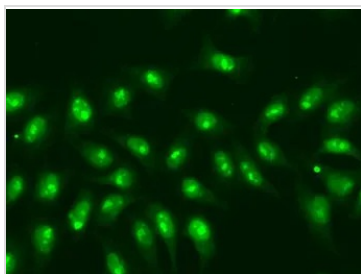
Loading : 25µg per lane


GTX54623 IP Image

IP analysis of HepG2 cell lysate using GTX54623 POLR2D antibody.

Antibody amount : 1µg / 200µg lysate

Dilution : 1:1000


GTX54623 ICC/IF Image

ICC/IF analysis of A549 cells using GTX54623 POLR2D antibody.



For full product information, images and publications, please visit our [website](https://www.genetex.com).