

PACT antibody

Cat. No. GTX54644

Host	Rabbit
Clonality	Polyclonal
Isotype	IgG
Applications	WB, ICC/IF, IP
Reactivity	Human

Package
50 µg

Applications

Application Note

IF: 1:500. WB: 1:1000 - 1:3000

Calculated MW 34 kDa. ([Note](#))

Properties

Form	Liquid
Buffer	PBS
Preservative	No preservatives
Storage	Store as concentrated solution. Centrifuge briefly prior to opening vial. For short-term storage (1-2 weeks), store at 4°C. For long-term storage, aliquot and store at -20°C or below. Avoid multiple freeze-thaw cycles.
Concentration	Batch dependent (Please refer to the vial label for the specific concentration.)
Immunogen	Human PACT.
Conjugation	Unconjugated

Note

For laboratory research use only. Not for any clinical, therapeutic, or diagnostic use in humans or animals. Not for animal or human consumption.

Purchasers shall not, and agree not to enable third parties to, analyze, copy, reverse engineer or otherwise attempt to determine the structure or sequence of the product.

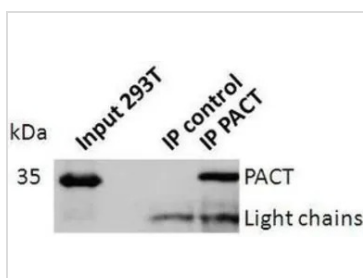


For full product information, images and publications, please visit our [website](#).

DATA IMAGES


GTX54644 WB Image

WB analysis of lysates from Jurkat, astrocytes and 293T cells using PACT antibody at a dilution of 1:2000. GAPDH was used as a loading control.


GTX54644 IP Image

IP analysis was performed with 293T lysate and either PACT antibody or control IgG. The precipitates were detected by the same antibody.



For full product information, images and publications, please visit our [website](https://www.genetex.com).