

COL17A1 antibody [NC16a-3]

Cat. No. GTX54647

Host	Mouse
Clonality	Monoclonal
Isotype	IgG1
Applications	WB, IHC-P, IHC-Fr, ELISA
Reactivity	Human

Package
250 µg

Applications

Application Note

*Optimal dilutions/concentrations should be determined by the researcher.

Suggested dilution	Recommended dilution
WB	1:1000
IHC-P	1:40
IHC-Fr	Assay dependent
ELISA	Assay dependent

Not tested in other applications.

Calculated MW 150 kDa. ([Note](#))

Product Note This antibody recognizes the NC16a-domain of collagen XVII (aa 545-557). It does not cross-react with mouse and rat skin based on internal testing; other species not tested.

Properties

Form	Liquid
Buffer	PBS
Preservative	No preservatives
Storage	Store as concentrated solution. Centrifuge briefly prior to opening vial. For short-term storage (1-2 weeks), store at 4°C. For long-term storage, aliquot and store at -20°C or below. Avoid multiple freeze-thaw cycles.
Concentration	Batch dependent (Please refer to the vial label for the specific concentration.)
Immunogen	Purified recombinant NC16a-domain of collagen XVII. The epitope has been mapped to aa545-557 (PMID: 19158842).
Conjugation	Unconjugated



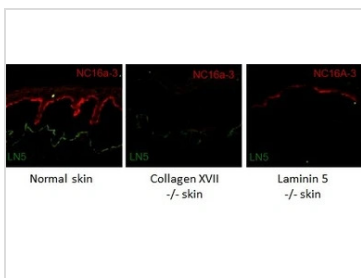
For full product information, images and publications, please visit our [website](#).

For laboratory research use only. Not for any clinical, therapeutic, or diagnostic use in humans or animals. Not for animal or human consumption.

Note

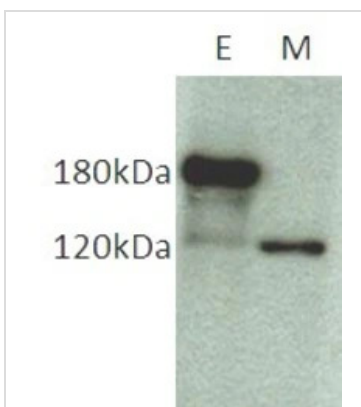
Purchasers shall not, and agree not to enable third parties to, analyze, copy, reverse engineer or otherwise attempt to determine the structure or sequence of the product.

DATA IMAGES



GTX54647 IHC-Fr Image

IHC-Fr analysis of normal human skin (left) and skin tissue in absence of collagenXVII (middle) from patients with inherited skin-blistering disorders using GTX54647 COL17A1 antibody [NC16a-3]. Another skin tissue in absence of laminin 5 (right) was stained with a rabbit anti-laminin 5 antibody.



GTX54647 WB Image

WB analysis of keratinocyte extract (E) and keratinocyte medium (M) using GTX54647 COL17A1 antibody [NC16a-3]. This antibody detects collagen XVII and its 120kDa shed ectodomain.



For full product information, images and publications, please visit our [website](#).