

## COL17A1 antibody [NC16a-3]

Cat. No. GTX54647

Host	Mouse
Clonality	Monoclonal
Isotype	IgG1
Applications	WB, IHC-P, IHC-Fr, ELISA
Reactivity	Human

Package  
250 µg

## Applications

## Application Note

\*Optimal dilutions/concentrations should be determined by the researcher.

Suggested dilution	Recommended dilution
WB	1:1000
IHC-P	1:40
IHC-Fr	Assay dependent
ELISA	Assay dependent

Not tested in other applications.

**Calculated MW** 150 kDa. ([Note](#))**Product Note** This antibody recognizes the NC16a-domain of collagen XVII (aa 545-557). It does not cross-react with mouse and rat skin based on internal testing; other species not tested.

## Properties

Form	Liquid
Buffer	PBS
Preservative	No preservative
Storage	Store as concentrated solution. Centrifuge briefly prior to opening vial. For short-term storage (1-2 weeks), store at 4°C. For long-term storage, aliquot and store at -20°C or below. Avoid multiple freeze-thaw cycles.
Concentration	Batch dependent (Please refer to the vial label for the specific concentration.)
Immunogen	Purified recombinant NC16a-domain of collagen XVII. The epitope has been mapped to aa545-557 (PMID: 19158842).
Conjugation	Unconjugated



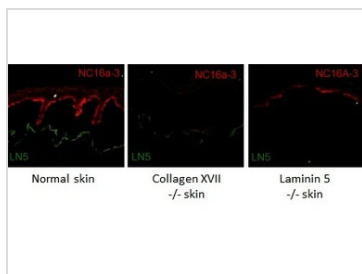
For full product information, images and publications, please visit our [website](#).

For laboratory research use only. Not for any clinical, therapeutic, or diagnostic use in humans or animals. Not for animal or human consumption.

## Note

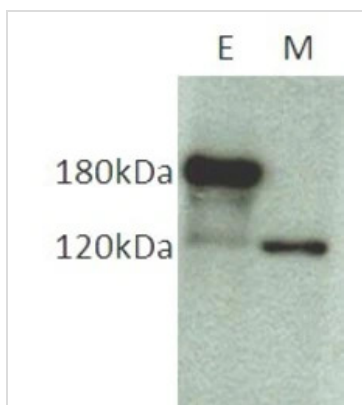
Purchasers shall not, and agree not to enable third parties to, analyze, copy, reverse engineer or otherwise attempt to determine the structure or sequence of the product.

## DATA IMAGES



### GTX54647 IHC-Fr Image

IHC-Fr analysis of normal human skin (left) and skin tissue in absence of collagenXVII (middle) from patients with inherited skin-blistering disorders using GTX54647 COL17A1 antibody [NC16a-3]. Another skin tissue in absence of laminin 5 (right) was stained with a rabbit anti-laminin 5 antibody.



### GTX54647 WB Image

WB analysis of keratinocyte extract (E) and keratinocyte medium (M) using GTX54647 COL17A1 antibody [NC16a-3]. This antibody detects collagen XVII and its 120kDa shed ectodomain.



For full product information, images and publications, please visit our [website](#).