

Tau (phospho Ser208/210) antibody

Cat. No. GTX54656

Host	Rabbit
Clonality	Polyclonal
Isotype	IgG
Applications	WB, ELISA, IHC
Reactivity	Human

Package
50 µl

Applications

Application Note

IHC: 1:1000. WB: 1:10000

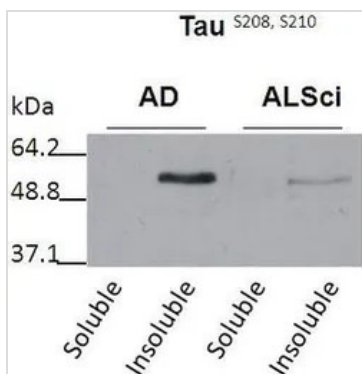
Calculated MW 79 kDa. ([Note](#))

Properties

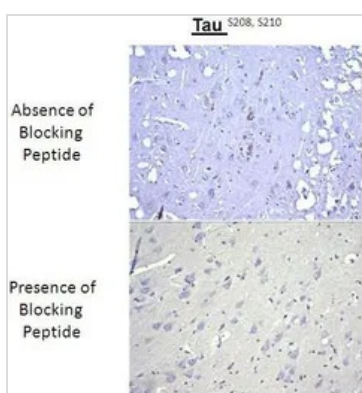
Form Liquid**Buffer** PBS**Preservative** No preservatives**Storage** Store as concentrated solution. Centrifuge briefly prior to opening vial. For short-term storage (1-2 weeks), store at 4°C. For long-term storage, aliquot and store at -20°C or below. Avoid multiple freeze-thaw cycles.**Concentration** Batch dependent (Please refer to the vial label for the specific concentration.)**Immunogen** Phospho-Tau (ser 208/210).**Conjugation** Unconjugated**Note** For laboratory research use only. Not for any clinical, therapeutic, or diagnostic use in humans or animals. Not for animal or human consumption.

Purchasers shall not, and agree not to enable third parties to, analyze, copy, reverse engineer or otherwise attempt to determine the structure or sequence of the product.

For full product information, images and publications, please visit our [website](#).

DATA IMAGES

GTX54656 WB Image

WB analysis of soluble and insoluble fractions in samples isolated from patients with a neurodegenerative disease using Tau (phospho Ser208/210) antibody (AD: Alzheimer's disease. ALSci: Amyotropic lateral sclerosis).


GTX54656 IHC Image

IHC analysis of brain tissues using Tau (phospho Ser208/210) antibody in the absence or presence of blocking peptide.



For full product information, images and publications, please visit our [website](#).