

## Tau (phospho Thr175) antibody

**Cat. No. GTX54657**

<b>Host</b>	Rabbit
<b>Clonality</b>	Polyclonal
<b>Isotype</b>	IgG
<b>Applications</b>	WB, ELISA, IHC
<b>Reactivity</b>	Human

**Package**  
50 µl

## Applications

**Application Note**

IHC: 1:1000. WB: 1:10000

**Calculated MW** 79 kDa. ([Note](#))

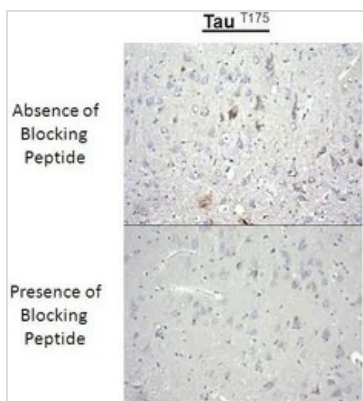
## Properties

**Form** Liquid**Buffer** PBS**Preservative** No preservatives**Storage** Store as concentrated solution. Centrifuge briefly prior to opening vial. For short-term storage (1-2 weeks), store at 4°C. For long-term storage, aliquot and store at -20°C or below. Avoid multiple freeze-thaw cycles.**Concentration** Batch dependent (Please refer to the vial label for the specific concentration.)**Immunogen** Phospho-Tau (thr 175).**Conjugation** Unconjugated**Note** For laboratory research use only. Not for any clinical, therapeutic, or diagnostic use in humans or animals. Not for animal or human consumption.

Purchasers shall not, and agree not to enable third parties to, analyze, copy, reverse engineer or otherwise attempt to determine the structure or sequence of the product.

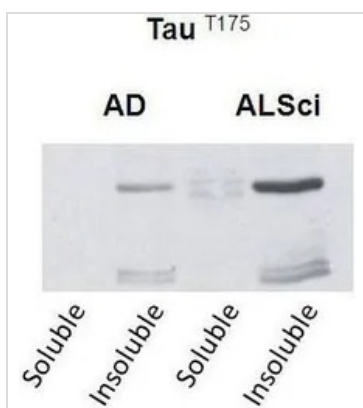
For full product information, images and publications, please visit our [website](#).

DATA IMAGES



**GTX54657 IHC Image**

IHC analysis of brain tissues using Tau (phospho Thr175) antibody in the absence or presence of blocking peptide.



**GTX54657 WB Image**

WB analysis of soluble and insoluble fractions in samples isolated from patients with a neurodegenerative disease using Tau (phospho Thr175) antibody (AD: Alzheimer's disease. ALSci: Amyotrophic lateral sclerosis).



For full product information, images and publications, please visit our [website](#).