

Tau (phospho Tyr18) antibody [9G3]

Cat. No. GTX54658

Host	Mouse
Clonality	Monoclonal
Isotype	IgG2a
Applications	WB, ICC/IF, IHC
Reactivity	Human, Mouse, Rat

References (4)

Package

50 µg

Applications

Application Note

IF: 1:2000 - 1:5000. IHC: 1:1000 - 1:5000. WB: 1:1000 - 1:5000

Calculated MW 79 kDa. ([Note](#))

Properties

Form	Liquid
Buffer	PBS
Preservative	No preservatives
Storage	Store as concentrated solution. Centrifuge briefly prior to opening vial. For short-term storage (1-2 weeks), store at 4°C. For long-term storage, aliquot and store at -20°C or below. Avoid multiple freeze-thaw cycles.
Concentration	Batch dependent (Please refer to the vial label for the specific concentration.)
Immunogen	Phospho-Tau (tyr 18).
Conjugation	Unconjugated

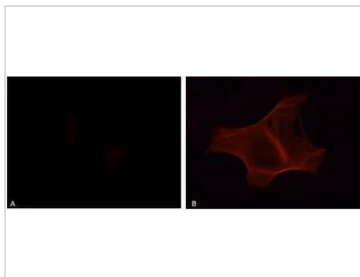
Note

For laboratory research use only. Not for any clinical, therapeutic, or diagnostic use in humans or animals. Not for animal or human consumption.

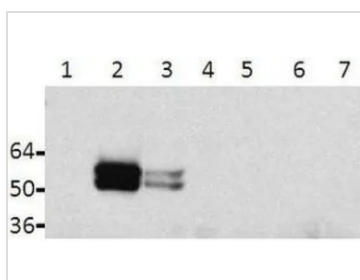
Purchasers shall not, and agree not to enable third parties to, analyze, copy, reverse engineer or otherwise attempt to determine the structure or sequence of the product.



For full product information, images and publications, please visit our [website](#).

DATA IMAGES

GTx54658 ICC/IF Image

ICC/IF analysis of HeLa cells transfected with (A) Tau and (B) Tau + Fyn using Tau (phospho Tyr18) antibody at a dilution of 1:200.


GTx54658 WB Image

WB analysis of lysates from HeLa cells (4) untransfected and transfected with (1) Tau, (2) Tau + Fyn, (3) Tau + Src, (5) TauY18F, (6) TauY18F + Fyn and (7) TauY18F + Src using Tau (phospho Tyr18) antibody [9G3].



For full product information, images and publications, please visit our [website](https://www.genetex.com).