

# YY1 antibody

**Cat. No. GTX54659**

<b>Host</b>	Chicken
<b>Clonality</b>	Polyclonal
<b>Isotype</b>	IgY
<b>Applications</b>	WB, ICC/IF, IHC-Fr
<b>Reactivity</b>	Human, Mouse, Rat, Sheep, Pig

**Package**

30 µg

## Applications

### Application Note

IF: 1:500 - 1:1000. WB: 1:3000 - 1:8000

**Calculated MW** 45 kDa. ( [Note](#) )

## Properties

<b>Form</b>	Liquid
<b>Buffer</b>	PBS
<b>Preservative</b>	No preservatives
<b>Storage</b>	Store as concentrated solution. Centrifuge briefly prior to opening vial. For short-term storage (1-2 weeks), store at 4°C. For long-term storage, aliquot and store at -20°C or below. Avoid multiple freeze-thaw cycles.
<b>Concentration</b>	Batch dependent (Please refer to the vial label for the specific concentration.)
<b>Immunogen</b>	Human Transcription Factor Yin Yang 1.
<b>Conjugation</b>	Unconjugated

### Note

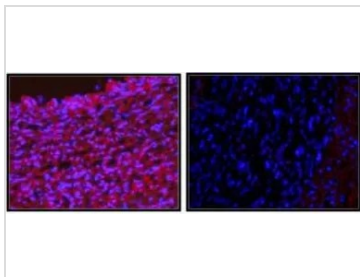
For laboratory research use only. Not for any clinical, therapeutic, or diagnostic use in humans or animals. Not for animal or human consumption.

Purchasers shall not, and agree not to enable third parties to, analyze, copy, reverse engineer or otherwise attempt to determine the structure or sequence of the product.



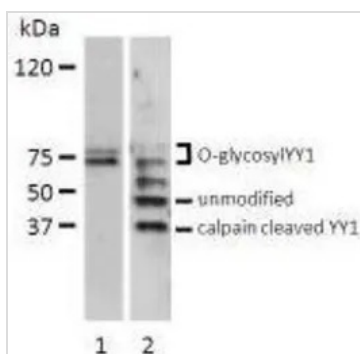
For full product information, images and publications, please visit our [website](#).

## DATA IMAGES



### GTX54659 IHC-Fr Image

IHC-Fr analysis of pig iliac artery sections using YY1 antibody (left, red) or pre-immune chicken IgY (right). The nuclear DAPI counter-stain is shown in blue.



### GTX54659 WB Image

WB analysis of lysates (200µg) from (1) serum-stimulated bovine endothelial cells and (2) HeLa cells using YY1 antibody.



For full product information, images and publications, please visit our [website](https://www.genetex.com).