

Robo4 antibody

Cat. No. GTX54660

Host	Guinea pig
Clonality	Polyclonal
Isotype	IgG
Applications	WB, FCM
Reactivity	Mouse

Package
50 µl

Applications

Application Note

*Optimal dilutions/concentrations should be determined by the researcher.

Suggested dilution	Recommended dilution
WB	1:1000
FCM	1:300

Not tested in other applications.

Calculated MW 108 kDa. ([Note](#))

Properties

Form Liquid

Buffer Serum

Preservative No preservatives

Storage Store as concentrated solution. Centrifuge briefly prior to opening vial. For short-term storage (1-2 weeks), store at 4°C. For long-term storage, aliquot and store at -20°C or below. Avoid multiple freeze-thaw cycles.

Concentration Batch dependent (Please refer to the vial label for the specific concentration.)

Immunogen Mouse Robo4.

Conjugation Unconjugated

Note

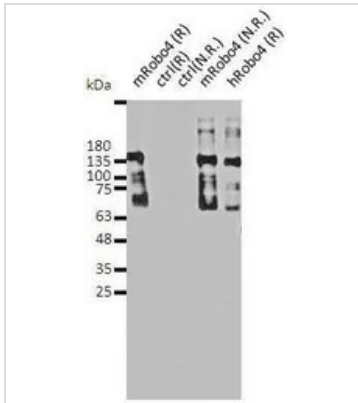
For laboratory research use only. Not for any clinical, therapeutic, or diagnostic use in humans or animals. Not for animal or human consumption.

Purchasers shall not, and agree not to enable third parties to, analyze, copy, reverse engineer or otherwise attempt to determine the structure or sequence of the product.



For full product information, images and publications, please visit our [website](#).

DATA IMAGES

**GTX54660 WB Image**

WB analysis of lysates from HEK293 cells transfected with mouse (m) or human (h) Robo4 cDNA vector or from untransfected cells (ctrl) using Robo4 antibody. The gels were under reduced (R) or non-reduced condition (N.R.).



For full product information, images and publications, please visit our [website](#).