

# RGNEF antibody

**Cat. No. GTX54661**

<b>Host</b>	Goat
<b>Clonality</b>	Polyclonal
<b>Isotype</b>	IgG
<b>Applications</b>	ICC/IF, IHC-P, IP
<b>Reactivity</b>	Human

References ( 1 )

Package

50 µg

## Applications

### Application Note

IF: 1:100. IHC: 1:100 - 1:500. IP: 1 ug/ml

## Properties

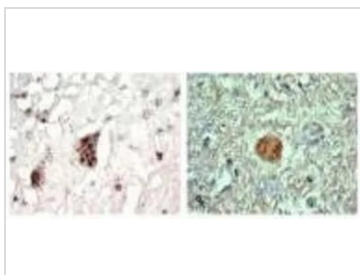
<b>Form</b>	Liquid
<b>Buffer</b>	PBS
<b>Preservative</b>	No preservatives
<b>Storage</b>	Store as concentrated solution. Centrifuge briefly prior to opening vial. For short-term storage (1-2 weeks), store at 4°C. For long-term storage, aliquot and store at -20°C or below. Avoid multiple freeze-thaw cycles.
<b>Concentration</b>	Batch dependent (Please refer to the vial label for the specific concentration.)
<b>Immunogen</b>	The human Rho-Guanine Nucleotide Exchange Factor (RGNEF) isoforms A and B.
<b>Conjugation</b>	Unconjugated

### Note

For laboratory research use only. Not for any clinical, therapeutic, or diagnostic use in humans or animals. Not for animal or human consumption.

Purchasers shall not, and agree not to enable third parties to, analyze, copy, reverse engineer or otherwise attempt to determine the structure or sequence of the product.

## DATA IMAGES



### GTX54661 IHC-P Image

IHC-P analysis of motor neurons from (left) neuropathologically normal human spinal cord and (right) ALS affected spinal cord using RGNEF antibody at a dilution of 1 :500.



For full product information, images and publications, please visit our [website](#).