

# VEGFA antibody

**Cat. No. GTX54662**

<b>Host</b>	Chicken
<b>Clonality</b>	Polyclonal
<b>Isotype</b>	IgY
<b>Applications</b>	WB, ICC/IF
<b>Reactivity</b>	Human, Pig

**Package**

30 µg

## Applications

### Application Note

IF: 1:500 - 1:2000. WB: 1:1000 - 1:8000

**Calculated MW** 27 kDa. ( [Note](#) )

## Properties

<b>Form</b>	Liquid
<b>Buffer</b>	PBS
<b>Preservative</b>	No preservatives
<b>Storage</b>	Store as concentrated solution. Centrifuge briefly prior to opening vial. For short-term storage (1-2 weeks), store at 4°C. For long-term storage, aliquot and store at -20°C or below. Avoid multiple freeze-thaw cycles.
<b>Concentration</b>	Batch dependent (Please refer to the vial label for the specific concentration.)
<b>Immunogen</b>	The partially reduced homodimers and multimers that VEGF spontaneously forms.
<b>Conjugation</b>	Unconjugated

### Note

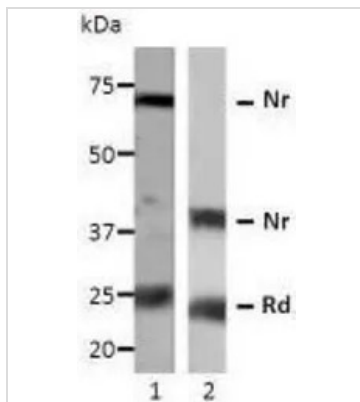
For laboratory research use only. Not for any clinical, therapeutic, or diagnostic use in humans or animals. Not for animal or human consumption.

Purchasers shall not, and agree not to enable third parties to, analyze, copy, reverse engineer or otherwise attempt to determine the structure or sequence of the product.



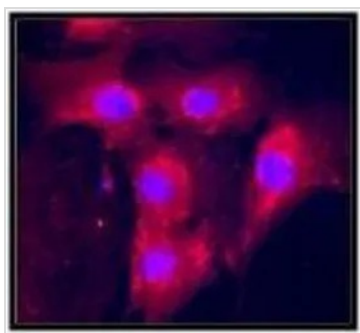
For full product information, images and publications, please visit our [website](#).

## DATA IMAGES



### GTX54662 WB Image

WB analysis of (1) human ovarian follicular fluid and (2) HeLa lysates using VEGFA antibody. Lane 2 shows that the antibody detects nonreduced (Nr) and reduced (Rd) VEGFA.



### GTX54662 ICC/IF Image

ICC/IF analysis of paraformaldehyde-fixed primary pig aortic endothelial cells using VEGFA antibody (red) and DAPI (blue).



For full product information, images and publications, please visit our [website](https://www.genetex.com).