

DSCAM antibody [DS2-176]

Cat. No. GTX54663

Host	Mouse
Clonality	Monoclonal
Isotype	IgG1
Applications	WB, IHC
Reactivity	Chicken

Package
50 µg

Applications

Application Note

IHC: 1:250 - 1:500

Properties

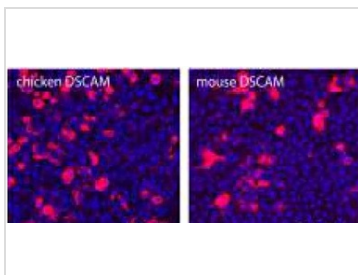
Form	Liquid
Buffer	PBS
Preservative	No preservatives
Storage	Store as concentrated solution. Centrifuge briefly prior to opening vial. For short-term storage (1-2 weeks), store at 4°C. For long-term storage, aliquot and store at -20°C or below. Avoid multiple freeze-thaw cycles.
Concentration	Batch dependent (Please refer to the vial label for the specific concentration.)
Immunogen	Chicken Dscam protein.
Conjugation	Unconjugated

Note

For laboratory research use only. Not for any clinical, therapeutic, or diagnostic use in humans or animals. Not for animal or human consumption.

Purchasers shall not, and agree not to enable third parties to, analyze, copy, reverse engineer or otherwise attempt to determine the structure or sequence of the product.

DATA IMAGES

**GTX54663 IHC Image**

ICC/IF analysis of HEK293 cells transfected with chicken DSCAM or mouse DSCAM using DSCAM antibody [DS2-176] (red) and DAPI (blue).



For full product information, images and publications, please visit our [website](#).