

## LKB1 antibody

Cat. No. GTX54702

Host	Rabbit
Clonality	Polyclonal
Isotype	IgG
Applications	WB, ICC/IF, IHC-P
Reactivity	Human, Mouse

Package  
100 µl

## Applications

## Application Note

\*Optimal dilutions/concentrations should be determined by the researcher.

Suggested dilution	Recommended dilution
WB	1:500 - 1:2000
ICC/IF	1:50 - 1:200
IHC-P	1:50 - 1:200

Not tested in other applications.

Calculated MW 49 kDa. ( [Note](#) )

## Properties

Form	Liquid
Buffer	PBS, 50% Glycerol
Preservative	0.02% Sodium azide
Storage	Store as concentrated solution. Centrifuge briefly prior to opening vial. For short-term storage (1-2 weeks), store at 4°C. For long-term storage, aliquot and store at -20°C or below. Avoid multiple freeze-thaw cycles.
Concentration	Batch dependent (Please refer to the vial label for the specific concentration.)
Immunogen	Recombinant fusion protein containing a sequence corresponding to amino acids 134-433 of human STK11 (NP_000446.1).
Purification	Purified by affinity chromatography
Conjugation	Unconjugated

## Note

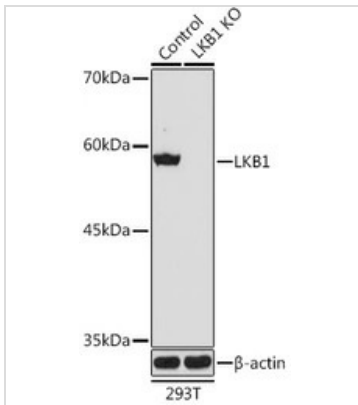
For laboratory research use only. Not for any clinical, therapeutic, or diagnostic use in humans or animals. Not for animal or human consumption.

Purchasers shall not, and agree not to enable third parties to, analyze, copy, reverse engineer or otherwise attempt to determine the structure or sequence of the product.



For full product information, images and publications, please visit our [website](#).

## DATA IMAGES

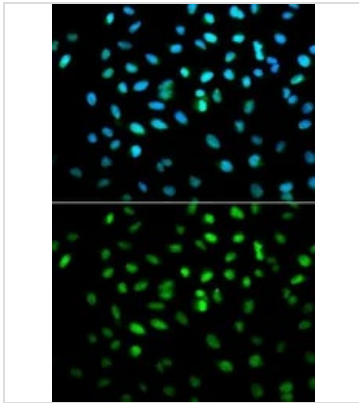


### GTX54702 WB Image

WB analysis of normal (control) and knockout (KO) 293T cell lysate using GTX54702 LKB1 antibody. The signal was developed with ECL plus-Enhanced.

Dilution : 1:1000

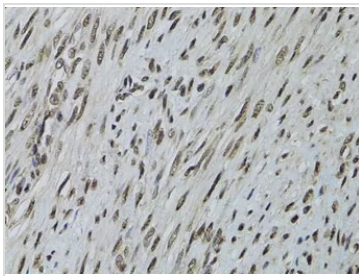
Loading : 25µg per lane



### GTX54702 ICC/IF Image

ICC/IF analysis of MCF7 cells using GTX54702 LKB1 antibody.

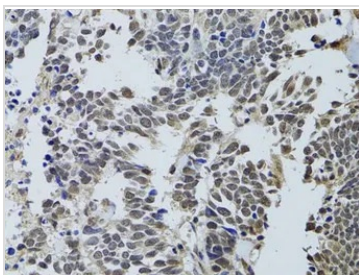
Blue : DAPI



### GTX54702 IHC-P Image

IHC-P analysis of human uterine cancer tissue using GTX54702 LKB1 antibody.

Dilution : 1:100



### GTX54702 IHC-P Image

IHC-P analysis of human lung cancer tissue using GTX54702 LKB1 antibody.

Dilution : 1:100



For full product information, images and publications, please visit our [website](https://www.genetex.com).