

eIF2B3 antibody [1H3]

Cat. No. GTX54741

Host	Mouse
Clonality	Monoclonal
Isotype	IgG1
Applications	WB, ICC/IF, IHC-P, IP
Reactivity	Human, Rat, Primate

Package
100 µg

Applications

Application Note

*Optimal dilutions/concentrations should be determined by the researcher.

Suggested dilution	Recommended dilution
WB	1:1000
ICC/IF	1:10-1:100
IHC-P	1:100-1:200
IP	3 µg

Not tested in other applications.

Calculated MW 50 kDa. ([Note](#))

Properties

Form	Liquid
Buffer	PBS, 0.1% BSA, 30% Glycerol
Preservative	0.05% Sodium azide
Storage	Store as concentrated solution. Centrifuge briefly prior to opening vial. For short-term storage (1-2 weeks), store at 4°C. For long-term storage, aliquot and store at -20°C or below. Avoid multiple freeze-thaw cycles.
Concentration	1 mg/ml (Please refer to the vial label for the specific concentration.)
Immunogen	Full length human eIF2B3 produced in HEK293T cells.
Purification	Protein A purified
Conjugation	Unconjugated

Note

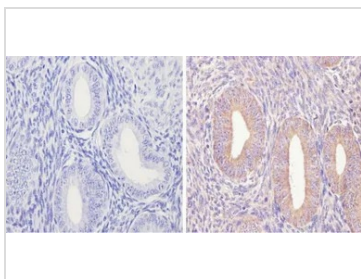
For laboratory research use only. Not for any clinical, therapeutic, or diagnostic use in humans or animals. Not for animal or human consumption.

Purchasers shall not, and agree not to enable third parties to, analyze, copy, reverse engineer or otherwise attempt to determine the structure or sequence of the product.



For full product information, images and publications, please visit our [website](#).

DATA IMAGES

**GTX54741 IHC-P Image**

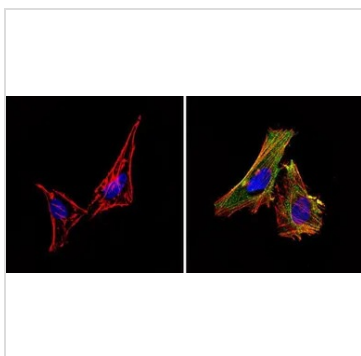
IHC-P analysis of human uterus tissue using GTX54741 eIF2B3 antibody [1H3].

Right : Primary antibody

Left : Negative control without primary antibody

Antigen retrieval : 10mM sodium citrate (pH 6.0), microwaved for 8-15 min

Dilution : 1:100

**GTX54741 ICC/IF Image**

ICC/IF analysis of HeLa cells using GTX54741 eIF2B3 antibody [1H3]. Cells were probed without (left) or with(right) an antibody.

Green : Primary antibody

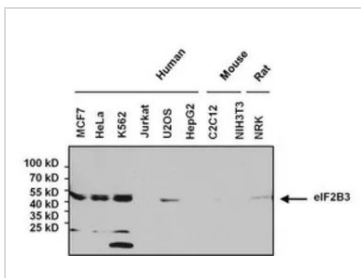
Blue : Nuclei

Red : Actin

Fixation : Formalin

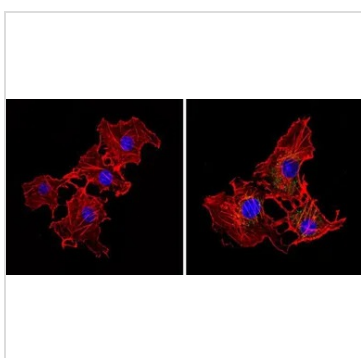
Permeabilization : 0.1% Triton X-100 in TBS for 5-10 minute

Dilution : 1:50 and incubated overnight

**GTX54741 WB Image**

WB analysis of 80µg whole cell lysate using GTX54741 eIF2B3 antibody [1H3].

Dilution : 1:1000

**GTX54741 ICC/IF Image**

ICC/IF analysis of COS7 cells using GTX54741 eIF2B3 antibody [1H3]. Cells were probed without (left) or with(right) an antibody.

Green : Primary antibody

Blue : Nuclei

Red : Actin

Fixation : Formalin

Permeabilization : 0.1% Triton X-100 in TBS for 5-10 minute

Dilution : 1:50 and incubated overnight



For full product information, images and publications, please visit our [website](#).