

# CPT2 antibody [1C2AE6]

**Cat. No. GTX54744**

<b>Host</b>	Mouse
<b>Clonality</b>	Monoclonal
<b>Isotype</b>	IgG3
<b>Applications</b>	ICC/IF, IP, ELISA
<b>Reactivity</b>	Human, Mouse, Rat, Bovine

**Package**  
100 µg

## Applications

### Application Note

\*Optimal dilutions/concentrations should be determined by the researcher.

Suggested dilution	Recommended dilution
ICC/IF	5 µg/ml
IP	Assay dependent
ELISA	Assay dependent

Not tested in other applications.

## Properties

<b>Form</b>	Liquid
<b>Buffer</b>	HEPES buffered saline
<b>Preservative</b>	0.02% Sodium azide
<b>Storage</b>	Store as concentrated solution. Centrifuge briefly prior to opening vial. Store at 4°C.
<b>Concentration</b>	1 mg/ml (Please refer to the vial label for the specific concentration.)
<b>Immunogen</b>	Human CPT2
<b>Purification</b>	Purified IgG
<b>Conjugation</b>	Unconjugated

### Note

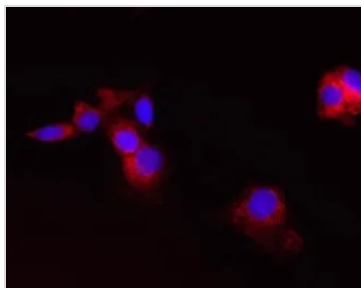
For laboratory research use only. Not for any clinical, therapeutic, or diagnostic use in humans or animals. Not for animal or human consumption.

Purchasers shall not, and agree not to enable third parties to, analyze, copy, reverse engineer or otherwise attempt to determine the structure or sequence of the product.



For full product information, images and publications, please visit our [website](#).

## DATA IMAGES



### GTX54744 ICC/IF Image

ICC/IF analysis of HDFn cells using GTX54744 CPT2 antibody [1C2AE6].

Red : Primary antibody

Blue : Nuclei

Fixation : 4% paraformaldehyde 20 mins

Permeabilization : Triton X-100 (0.1%, 15 min)

Dilution : 4 µg/ml overnight at 4°C



For full product information, images and publications, please visit our [website](#).